



1989-1997 Toyota Land Cruiser 80 Front Shocks

King Shocks 12472 Edison Way Garden Grove, CA 92841
714-530-8701 www.kingshocks.com

Front Parts List:

- 2 – 2.5 Front Shocks (25001-256 0-2" lift) (25001-351 3-5" lift) (25001-309 6" lift)
- 1 – Left Front Reservoir Bracket (25044-108)
- 1 – Right Front Reservoir Bracket (25044-109)
- 4 – Hose Clamps (62032)

Tools Required:

- Standard wrench and socket set
- Metric wrench and socket set
- Floor Jack/Jack Stands

TOYOTA LAND CRUISER 89-97
OEM PERFORMANCE SERIES KITS



FRONT: With the vehicle on level ground, set the emergency brake and block the rear tires. Using a floor jack, raise the front end and support the frame rails with jack stands for safety. Then remove the front tires. **NOTE: Never work under an unsupported vehicle.**

1. The front axle will be hanging by the shocks, keep a jack or jack stands under the axle to support it while removing shocks so that it does not abruptly drop down which could cause personal injury or damage to vehicles components i.e. brake lines, ABS lines, etc. Remove the factory shocks by removing the nuts at both ends of the shock.
2. Install King Shocks. Be aware that the shocks are side specific. Also be aware that the bushings are different thicknesses, the thicker bushings should be facing toward the cylinder. Install shocks with the thick bushing on the cylinder side of the mounts and the thinner bushing on the end of the shock with the anodized washer, flat washer and lock nut as shown in the photos below. Do not tighten yet, just get the nuts started to hold shock in place.



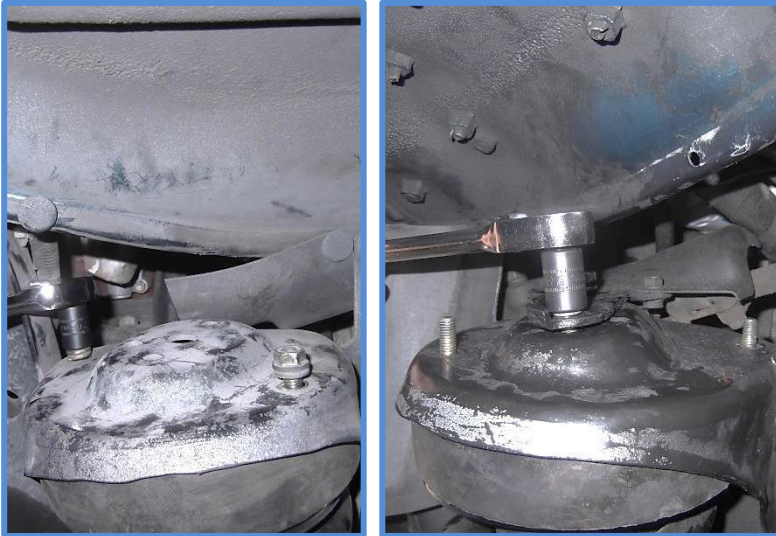
IMPORTANT: Read all instructions thoroughly from start to finish before beginning the install. Check parts list and make sure all parts are included in the kit. If the instructions are not properly followed severe frame, driveline and/or suspension damage may result. Check for frame and suspension damage prior to installation.

This kit does not require welding. Do not weld on any component. Welding may void the warranty and/or cause the product to fail. If any parts are missing, or for tech assistance; Contact King Off Road Racing Shocks: 714-530-8701 Most important after the install, Feel the difference and have fun.

1989-1997 Toyota Land Cruiser 80 Front Shocks

King Shocks 12472 Edison Way Garden Grove, CA 92841
714-530-8701 www.kingshocks.com

3. The reservoir bracket will be mounted to the top of the coil bucket. Remove the nuts from the studs on top of the coil bucket. Also, on the driver's side there is a steering shaft guard that needs to be removed.



4. Place the reservoir in the side specific reservoir bracket so the hose is behind the bracket. Then position the bracket on the studs on top of the coil bucket.



5. Install the nuts that were removed back on the studs and tighten. On the driver's side reinstall the steering shaft guard. Center the reservoir in the cradle and position the shock accordingly so that your install looks like the photo below.



6. Install the provided hose clamps and tighten.



IMPORTANT: Read all instructions thoroughly from start to finish before beginning the install. Check parts list and make sure all parts are included in the kit. If the instructions are not properly followed severe frame, driveline and/or suspension damage may result. Check for frame and suspension damage prior to installation.

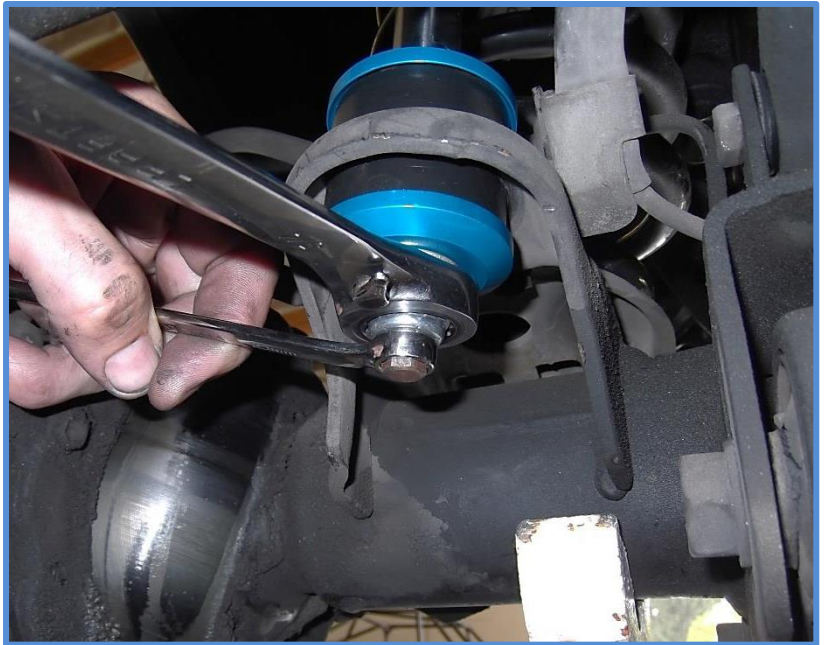
This kit does not require welding. Do not weld on any component. Welding may void the warranty and/or cause the product to fail. If any parts are missing, or for tech assistance; Contact King Off Road Racing Shocks: 714-530-8701 Most important after the install, Feel the difference and have fun.

1989-1997 Toyota Land Cruiser 80 Front Shocks

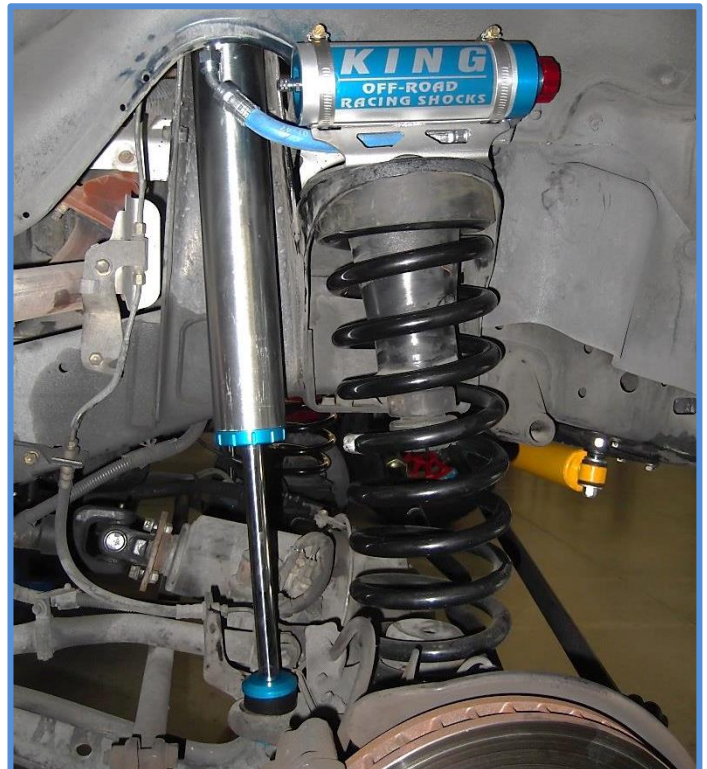
King Shocks 12472 Edison Way Garden Grove, CA 92841
714-530-8701 www.kingshocks.com

7. Once the reservoir is installed and everything is positioned properly you can tighten the upper and lower shock mounting nuts.

8. For the lower mount use a 10mm wrench to hold the stud to keep the shaft from spinning while tightening.



9. The finished install should look like the photo to the right... Make sure everything is installed properly and double check all hardware. Install the tires, remove jack stands and lower the vehicle to the ground. Recheck all hardware and lug nuts after 50 miles or so and periodically after that as part of routine maintenance.



King Shocks
12472 Edison Way
Garden Grove, CA 92841
www.kingshocks.com

IMPORTANT: Read all instructions thoroughly from start to finish before beginning the install. Check parts list and make sure all parts are included in the kit. If the instructions are not properly followed severe frame, driveline and/or suspension damage may result. Check for frame and suspension damage prior to installation.

This kit does not require welding. Do not weld on any component. Welding may void the warranty and/or cause the product to fail. If any parts are missing, or for tech assistance; Contact King Off Road Racing Shocks: 714-530-8701 Most important after the install, Feel the difference and have fun.