



## 1997-2006 Jeep TJ 2.5 Rear Shocks

King Shocks 12472 Edison Way Garden Grove, CA 92841  
714-530-8701 [www.kingshocks.com](http://www.kingshocks.com)

**Rear Parts List:**

2 – 2.5 Rear Shocks (25001-161 0-2” Lift) OR  
(25001-177 3-5” Lift)  
(25001-287 6” Lift)

**Tools Required:**

Floor Jack/Jack Stands  
Metric Wrench/Socket Set  
Standard Wrench/Socket Set

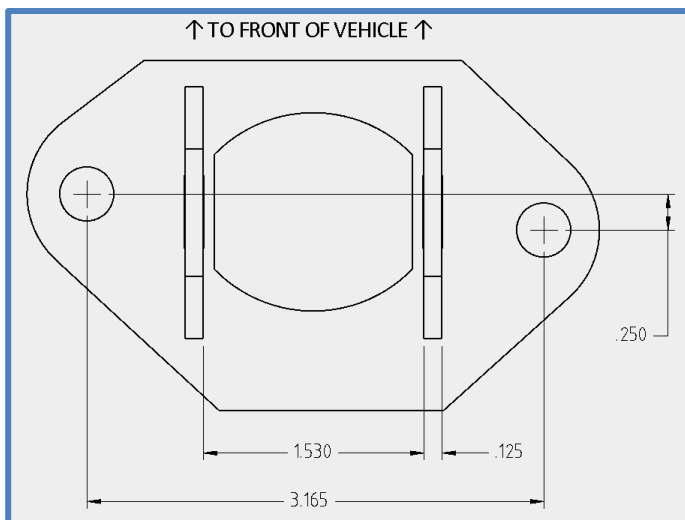
**Jeep Wrangler TJ**  
OEM PERFORMANCE SERIES



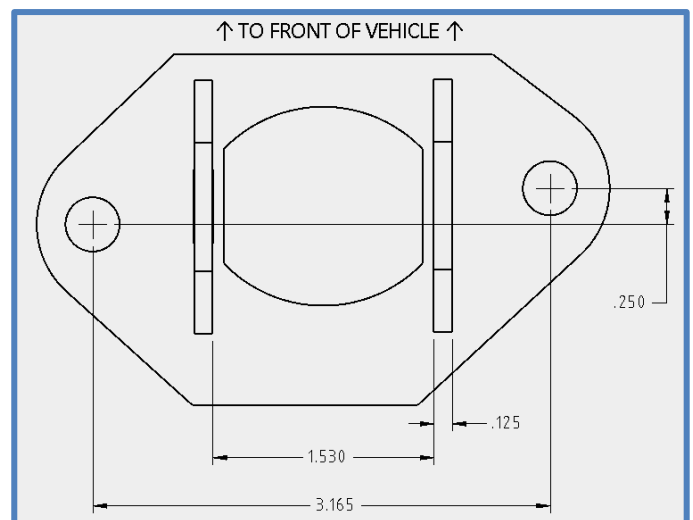
**REAR:** With the vehicle on level ground, block the front tires. Using a floor jack, raise the rear end and support the frame rails with jack stands for safety. Remove rear tires. **NOTE: Never work under an unsupported vehicle.**

1. Remove existing shocks by removing the lower mounting bolt first, then remove the two bolts from the upper mount and remove shocks. Install King Shocks by first removing the bar pin eliminator from the end cap. Place the bar pin bracket on the upper mount on vehicle and install the factory bolts. Be aware that the brackets are side specific.

## Left side rear upper mount



## Right side rear upper mount



**IMPORTANT:** Read all instructions thoroughly from start to finish before beginning the install. Check parts list and make sure all parts are included in the kit. If the instructions are not properly followed severe frame, driveline and/or suspension damage may result. Check for frame and suspension damage prior to installation.

This kit does not require welding. Do not weld on any component. Welding may void the warranty and/or cause the product to fail. If any parts are missing, or for tech assistance; Contact King Off Road Racing Shocks: 714-530-8701 Most important after the install, Feel the difference and have fun.



## 1997-2006 Jeep TJ 2.5 Rear Shocks

King Shocks 12472 Edison Way Garden Grove, CA 92841  
714-530-8701 [www.kingshocks.com](http://www.kingshocks.com)

## Left side rear upper mount

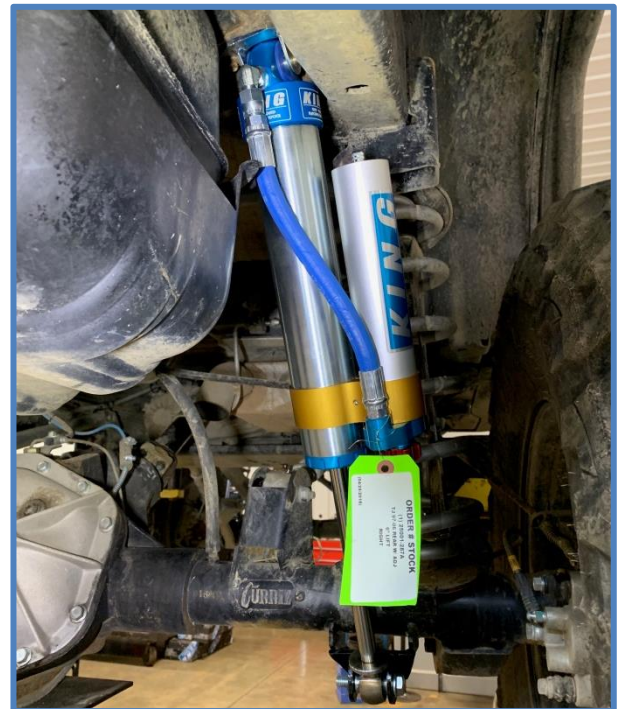


## Right side rear upper mount



2. Install King Shocks... Shock mounting for the rear on Jeep TJ's can vary from one vehicle to the next depending on factory options and aftermarket lift kits and accessories. Begin by installing shocks as labeled Left and Right. Place the end cap up into the bar pin eliminator bracket and install the 3/8" hardware provided with the shock. Place the rod end in the lower mount and install the factory bolt. Tighten upper 3/8" bolt to 35 ft/lbs. Tighten lower bolt to factory specs.

**Shocks should be installed as shown below with the fitting towards the rear of the vehicle and reservoirs facing out towards tire.**



**IMPORTANT:** Read all instructions thoroughly from start to finish before beginning the install. Check parts list and make sure all parts are included in the kit. If the instructions are not properly followed severe frame, driveline and/or suspension damage may result. Check for frame and suspension damage prior to installation.

This kit does not require welding. Do not weld on any component. Welding may void the warranty and/or cause the product to fail. If any parts are missing, or for tech assistance; Contact King Off Road Racing Shocks: 714-530-8701 Most important after the install, Feel the difference and have fun.





## 1997-2006 Jeep TJ 2.5 Rear Shocks

King Shocks 12472 Edison Way Garden Grove, CA 92841  
714-530-8701 [www.kingshocks.com](http://www.kingshocks.com)

3. Some TJ's came from the factory with a larger gas tank than others (15 gallon vs. 19 gallon). There seems to be no rhyme or reason to which vehicles have the larger gas tank... Some TJ's came standard with a 19 gallon tank others have a 15 gallon tank, both tanks were offered as an option for some model years... Anyway... If you are having an issue on the left side with the shock not fitting then you may have a TJ with the larger gas tank. In this case you will need to order the **TJ rear offset brackets: part # 25034-105 (Left) 25034-106 (Right)**

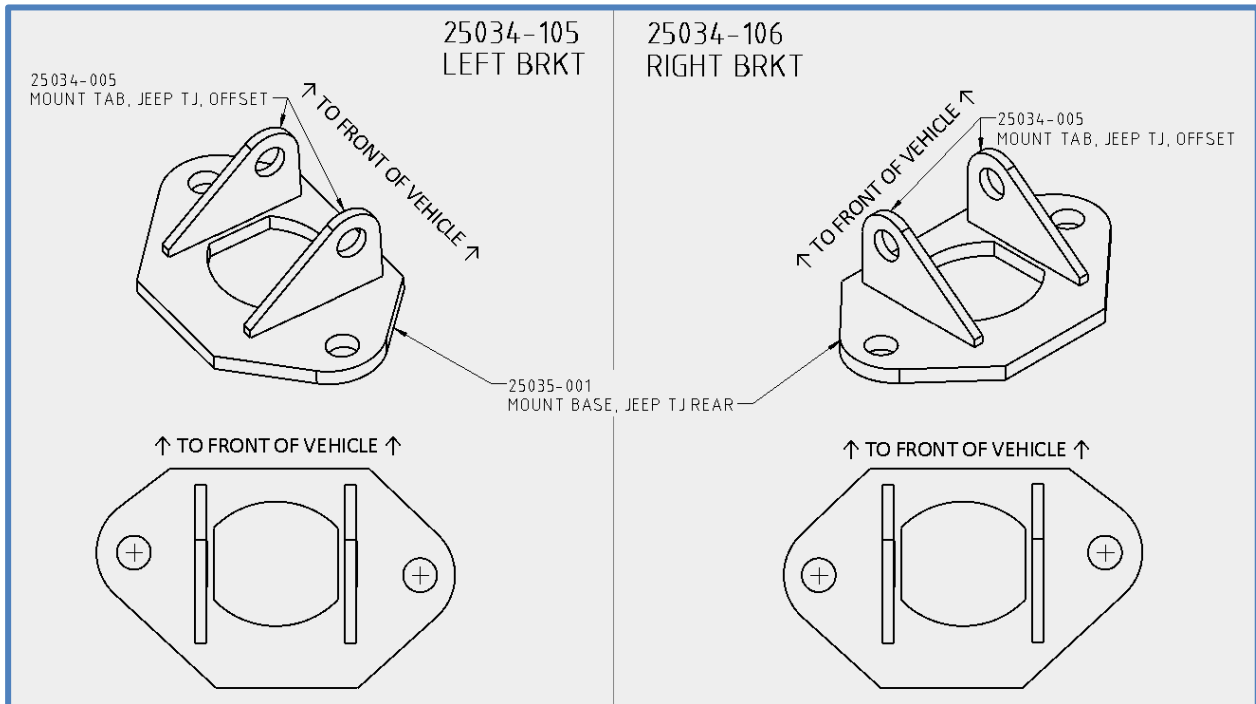
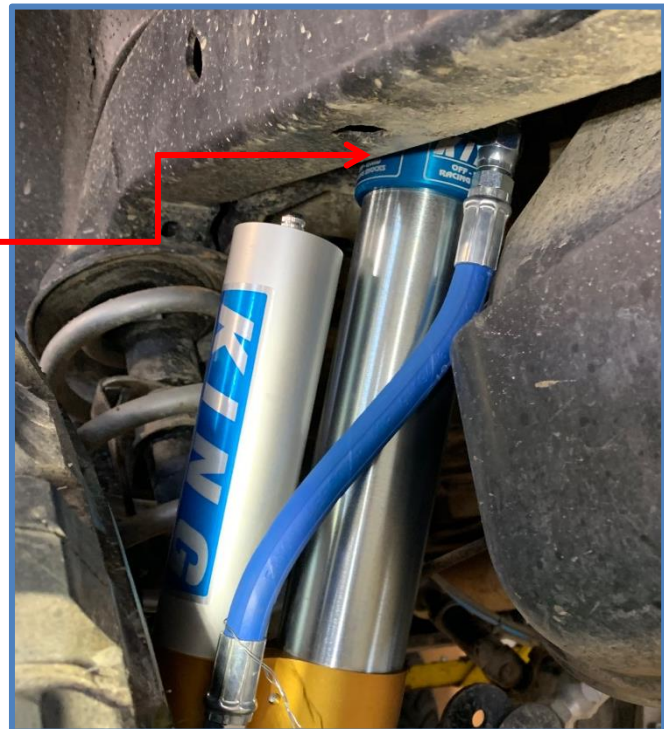


Photo shows TJ with 19 gallon gas tank. Fitting will hit gas tank when trying to install shocks as label – left and right. If you have this issue you will need to order offset brackets and swap left and right shocks so fitting is facing towards the front of vehicle and reservoirs are facing out towards tire. See photos on next page for proper orientation.



**IMPORTANT:** Read all instructions thoroughly from start to finish before beginning the install. Check parts list and make sure all parts are included in the kit. If the instructions are not properly followed severe frame, driveline and/or suspension damage may result. Check for frame and suspension damage prior to installation.

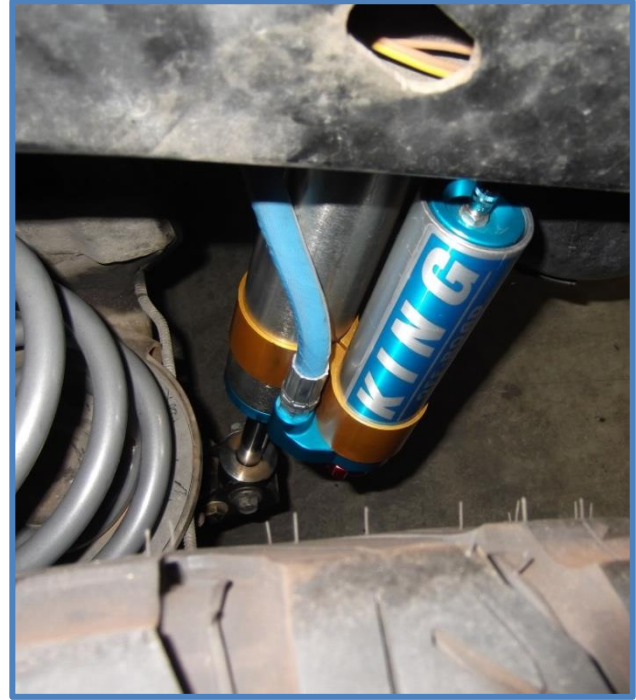
This kit does not require welding. Do not weld on any component. Welding may void the warranty and/or cause the product to fail. If any parts are missing, or for tech assistance; Contact King Off Road Racing Shocks: 714-530-8701 Most important after the install, Feel the difference and have fun.



## 1997-2006 Jeep TJ 2.5 Rear Shocks

King Shocks 12472 Edison Way Garden Grove, CA 92841  
714-530-8701 [www.kingshocks.com](http://www.kingshocks.com)

For TJ's with gas tank clearance issue you may need to mount Left shock on right side and right shock on left side. Mount shocks with hose fittings facing forward and reservoirs facing out towards tires. You may also need to loosen clamp and move reservoir back and rotate so the hose is tight to cylinder. Check for clearance issues with the coil spring and axle. Adjust as needed...



### **DOUBLE CHECK ALL HARDWARE:**

Make sure everything is installed correctly and all hardware is tight before reinstalling tires. Install tires, remove jack stands and lower vehicle to the ground. Recheck all hardware and lug nuts after 100 miles and periodically after that as part of routine maintenance.



King Shocks  
12472 Edison Way  
Garden Grove, CA 92841  
[www.kingshocks.com](http://www.kingshocks.com)

**IMPORTANT:** Read all instructions thoroughly from start to finish before beginning the install. Check parts list and make sure all parts are included in the kit. If the instructions are not properly followed severe frame, driveline and/or suspension damage may result. Check for frame and suspension damage prior to installation.

This kit does not require welding. Do not weld on any component. Welding may void the warranty and/or cause the product to fail. If any parts are missing, or for tech assistance; Contact King Off Road Racing Shocks: 714-530-8701 Most important after the install, Feel the difference and have fun.