

## 2007–2017 Jeep JK rear weld on bump stop kit

King Shocks 12472 Edison Way Garden Grove, CA 92841  
714-530-8701 [www.kingshocks.com](http://www.kingshocks.com)

**Parts List:**

- 1 – Left Bump Stop Bracket (20AB424-101)
- 1 – Right Bump Stop Bracket (20AB424-102)
- 1 – Left Lower Bump Pad Bracket (20AB425-101)
- 1 – Right Lower Bump Pad Bracket (20AB425-102)
- 2 – 2.0 Compact Bump Stops (BS2120)
- 2 – 14mm-1.5 x 100mm bolts (CB3830)
- 2 – 14mm Washers (CW1751)
- 2 – 3/8 x 1" Bolts (CB4701)
- 2 – 3/8 Nylock Nuts (CN2711)
- 4 – 3/8 SAE Washers (CW1701)

**Tools Required:**

- Floor Jack/Jack Stands
- Standard Wrench/Socket Set
- Metric Wrench/Socket Set
- Welding equipment
- Grinder

2007-2017 Jeep JK  
OEM PERFORMANCE SERIES



MADE IN 100%  
MADE IN THE USA  
FROM THE HIGHEST  
QUALITY BILLET  
ALLOY MATERIALS.  
U. S. A.

**WARNING:** This kit requires that your vehicle is equipped with wheels that have 4.5" of backspace or less. Vehicles with factory wheels will need at least 1.25" wheel spacers. As a general rule you should have at least 4" between tire and frame at ride height.

This kit is designed to work with stock vehicles with factory axles. This kit will also work with most lift kits up to 6". Any aftermarket parts that interfere with installation may require modifications and will be up to the vehicle owner/installer to determine which modifications will be necessary to complete install. If your vehicle has aftermarket axles, lift kit, control arms, etc. minor modifications may be necessary.

With the vehicle on level ground, block the front tires to prevent the vehicle from rolling. Using a floor jack, raise the rear end and support the frame rails on jack stands. Remove rear tires.

**NOTE:** Never work under an unsupported vehicle.



1. With the vehicle properly supported remove the coil springs so that you can cycle the suspension during the installation of bump stop brackets. Remove coil springs and leave shocks installed to determine where to set up the bump stops.

**IMPORTANT:** Read all instructions thoroughly from start to finish before beginning the install. Check parts list and make sure all parts are included in the kit. If the instructions are not properly followed severe frame, driveline and/or suspension damage may result. Check for frame and suspension damage prior to installation.

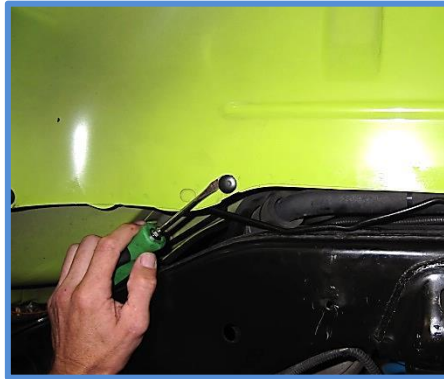
This kit **DOES** require welding. All welding must be performed by an experienced professional welder. **DO NOT** attempt any welding to your vehicle if you are not a professional welder. If any parts are missing, or for tech assistance; Contact King Off Road Racing Shocks: 714-530-8701  
Most important after the install, Feel the difference and have fun.




## 2007–2017 Jeep JK rear weld on bump stop kit

King Shocks 12472 Edison Way Garden Grove, CA 92841  
714-530-8701 [www.kingshocks.com](http://www.kingshocks.com)

2. Start with the frame bracket. First relocate brake line by removing brake line from clip. Carefully straighten brake line and relocate to hole in body as shown below. Reuse the clip or zip ties to secure brake lines.



3. Remove factory foam bump stop. 



4. Hold the bracket in position on the frame on both sides to test fit. You will need to mark the edges of the bracket so you can remove paint from the areas that will be welded. Check that the bracket is sitting tight to the frame all the way around. Grind any existing welds and splatter from the frame area that may keep the bracket from sitting tight against frame. The bracket should basically locate itself around the bulge on the frame for the existing bump stop mount and the tabs on the bottom of the bracket should wrap around the bottom of the frame. With the frame prepped for welding, clamp the bracket in position and tack weld each corner of the bracket.



**IMPORTANT:** Read all instructions thoroughly from start to finish before beginning the install. Check parts list and make sure all parts are included in the kit. If the instructions are not properly followed severe frame, driveline and/or suspension damage may result. Check for frame and suspension damage prior to installation.

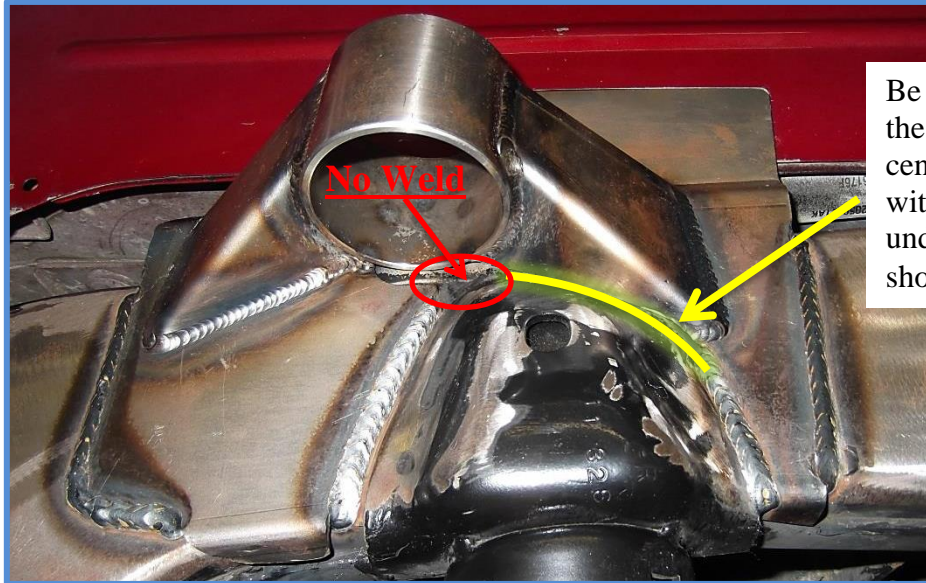
This kit **DOES** require welding. All welding must be performed by an experienced professional welder. **DO NOT** attempt any welding to your vehicle if you are not a professional welder. If any parts are missing, or for tech assistance; Contact King Off Road Racing Shocks: 714-530-8701  
Most important after the install, Feel the difference and have fun.



2007–2017 Jeep JK rear weld on bump stop kit

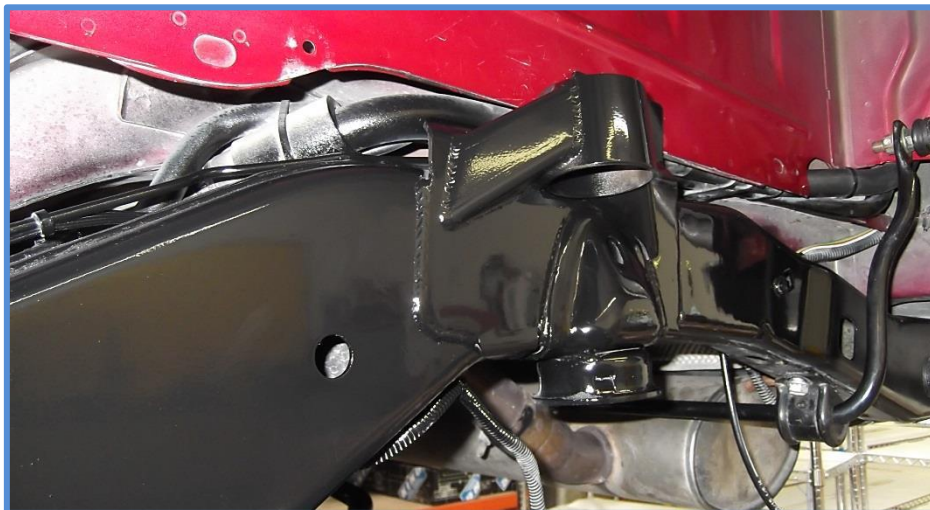
King Shocks 12472 Edison Way Garden Grove, CA 92841  
714-530-8701 [www.kingshocks.com](http://www.kingshocks.com)

5. Weld bracket to frame. Weld both sides and all the way around the center of bracket. See Photo below.



Be sure to weld all the way around the center of the bracket with a small gap under the tube area as shown.

6. Prep and paint brackets and frame to prevent rusting.



Next install the lower Strike Pads...

**IMPORTANT:** Read all instructions thoroughly from start to finish before beginning the install. Check parts list and make sure all parts are included in the kit. If the instructions are not properly followed severe frame, driveline and/or suspension damage may result. Check for frame and suspension damage prior to installation.

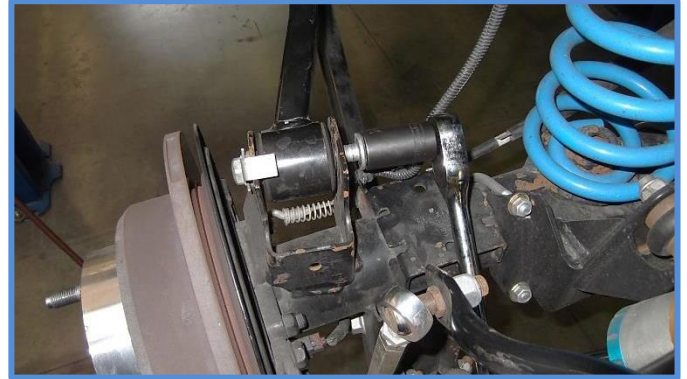
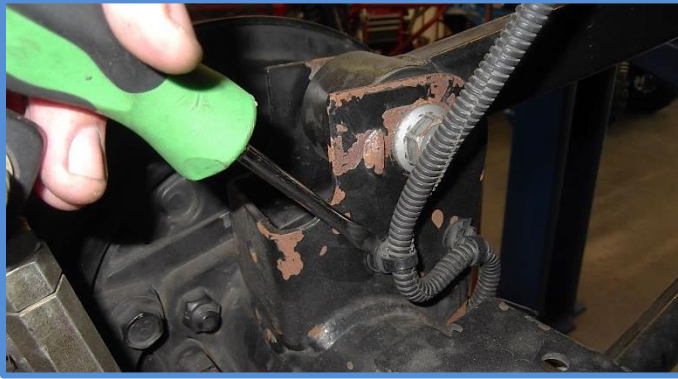
This kit **DOES** require welding. All welding must be performed by an experienced professional welder. **DO NOT** attempt any welding to your vehicle if you are not a professional welder. If any parts are missing, or for tech assistance; Contact King Off Road Racing Shocks: 714-530-8701  
Most important after the install, Feel the difference and have fun.



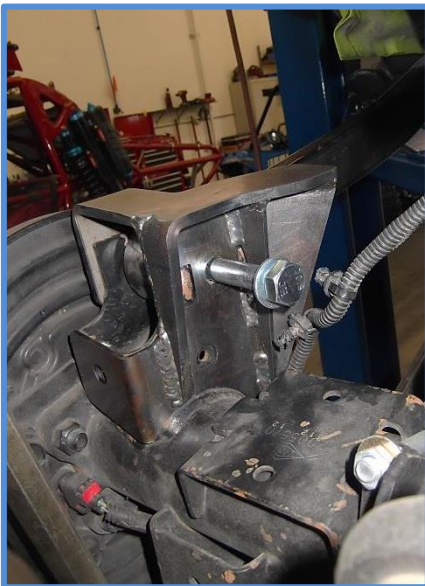
## 2007–2017 Jeep JK rear weld on bump stop kit

King Shocks 12472 Edison Way Garden Grove, CA 92841  
714-530-8701 [www.kingshocks.com](http://www.kingshocks.com)

7. First unclip ABS lines, then remove upper control arm bolts.



8. Slide the Strike Pad over the control arm bracket. Strike Pad may fit fairly tight and will need to be tapped into position with a mallet. Install the provided longer 14mm bolt and reuse the factory nut but do not tighten. Then install the provided 3/8 bolts with washers and nuts but do not tighten. With both bolts in place go ahead and tighten the control arm bolt first then tighten the 3/8 bolts.



9. Place one of the ABS line clips back into the provided hole in the control arm bracket.



**IMPORTANT:** Read all instructions thoroughly from start to finish before beginning the install. Check parts list and make sure all parts are included in the kit. If the instructions are not properly followed severe frame, driveline and/or suspension damage may result. Check for frame and suspension damage prior to installation.

This kit **DOES** require welding. All welding must be performed by an experienced professional welder. **DO NOT** attempt any welding to your vehicle if you are not a professional welder. If any parts are missing, or for tech assistance; Contact King Off Road Racing Shocks: 714-530-8701  
Most important after the install, Feel the difference and have fun.



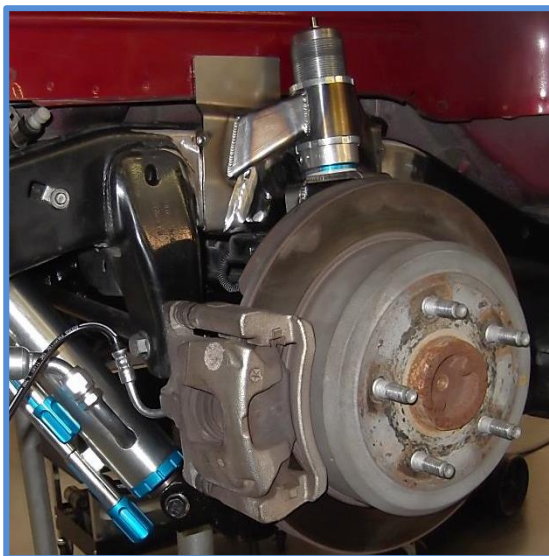
## 2007–2017 Jeep JK rear weld on bump stop kit

King Shocks 12472 Edison Way Garden Grove, CA 92841  
714-530-8701 [www.kingshocks.com](http://www.kingshocks.com)

10. Once all the brackets are installed you can install the bump stops. Unscrew the upper nut from the bump stop cylinder and place bump stop into the bump stop bracket. Thread upper nut back onto cylinder and tighten. Once the bump stop has been adjusted for your vehicle tighten the set screws on the nuts.

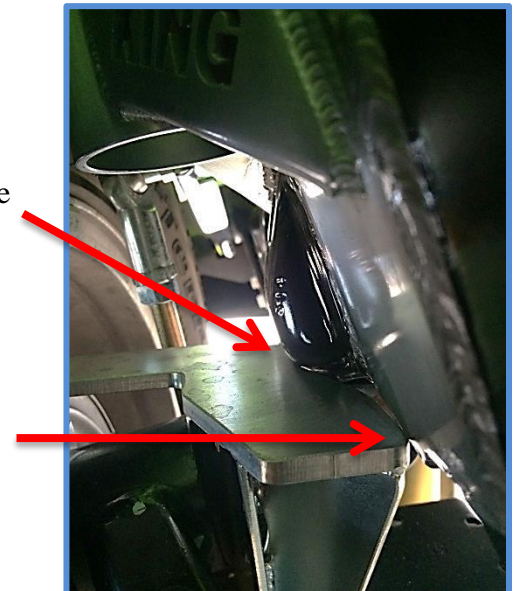


11. **Adjusting bump stops:** For vehicles with 0-2" of lift you will most likely have the bump stops all the way up as shown in the above photo. Each vehicle will vary depending on shocks and other variables. It is up to the installer to properly set up bump stops so that the shocks do not bottom out before the bump stops. With the springs removed and the shocks installed jack up the axle until the shocks are bottomed out. Adjust bump stops so that bump stops bottom out just before the shock does. Set the position and tighten the nuts and set screws. You must also articulate the suspension to check clearance with the strike pad and the bulge on frame from the factory bump stop mount and tire clearance with the bump stop. Factory bump stop pieces can be trimmed or removed. Do not alter the strike pad unless absolutely necessary.



If the Strike Pad touches the bulge in frame then grind the bulge.

If the Strike Pad touches the frame then grind the Strike Pad just enough so that it doesn't touch.



**IMPORTANT:** Read all instructions thoroughly from start to finish before beginning the install. Check parts list and make sure all parts are included in the kit. If the instructions are not properly followed severe frame, driveline and/or suspension damage may result. Check for frame and suspension damage prior to installation.

This kit **DOES** require welding. All welding must be performed by an experienced professional welder. **DO NOT** attempt any welding to your vehicle if you are not a professional welder. If any parts are missing, or for tech assistance; Contact King Off Road Racing Shocks: 714-530-8701  
Most important after the install, Feel the difference and have fun.