



2005+ Nissan Frontier Front Coilover

King Shocks 12472 Edison Way Garden Grove, CA 92841
714-530-8701 www.kingshocks.com

Front Parts List:

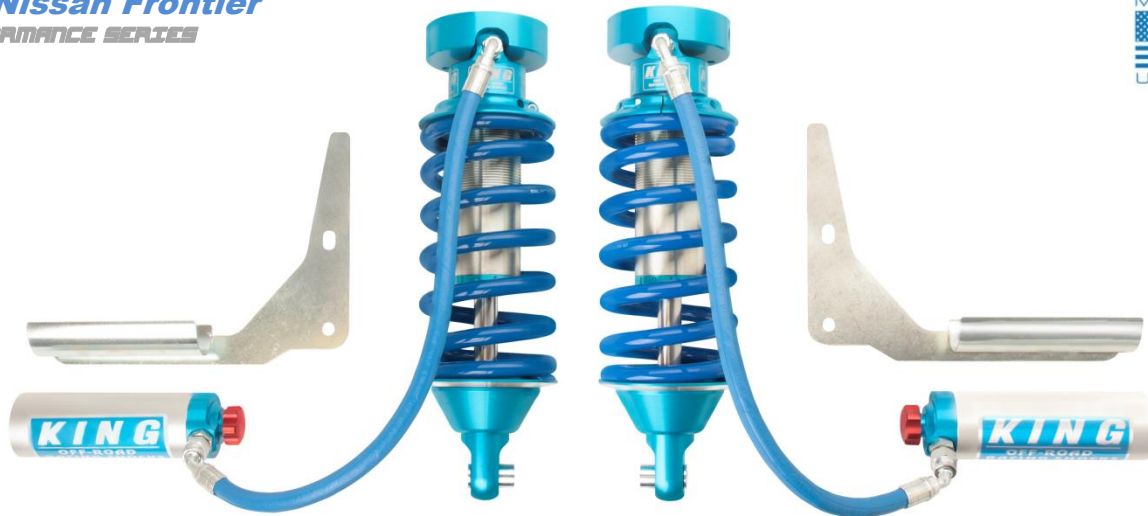
- 2 – Front 2.5 Coilover Shocks (25001-111)
- 2 – Front Reservoir Brackets (25055-100L & 25055-100R)
- 4 – Hose Clamps (62032)
- 4 – 3/8 X 1” Bolts (CB4701)
- 2 – 3/8 X 3/4” Bolts (CB4702)
- 2 – M12-1.25 X 25mm Bolts (CB3827)
- 2 – Adel Clamps (H41058)
- 6 – 1/4” SAE Washers (CW1501)
- 2 – 1/4-28 Nylock Nuts (CN2501)

Tools Required:

- Floor Jack/Jack Stands
- Metric Wrench/Socket Set
- Standard Wrench/Socket Set

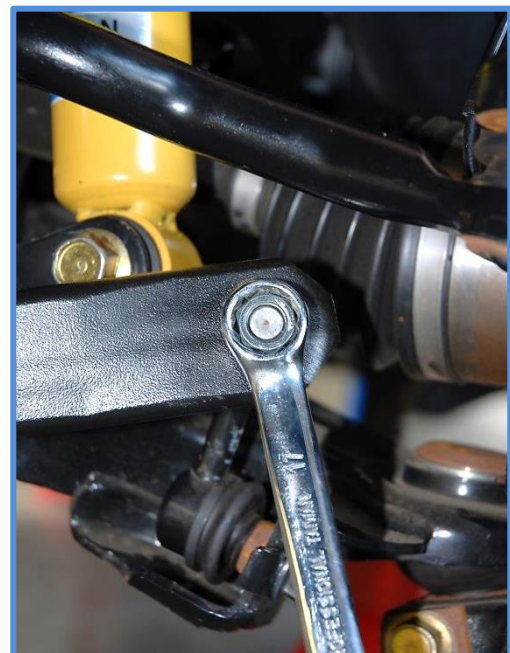
2005 + Nissan Frontier

DEM PERFORMANCE SERIES



FRONT: With the vehicle on level ground, set the emergency brake and block the rear tires. Using a floor jack, raise the front end and support the frame rails with jack stands for safety. Remove front tires. **NOTE: Never work under an unsupported vehicle.**

1. Remove sway bar link from the sway bar using a 17mm wrench on both the driver and passenger side of the vehicle. This is to allow access to the lower shock mount bolt.



IMPORTANT: Read all instructions thoroughly from start to finish before beginning the install. Check parts list and make sure all parts are included in the kit. If the instructions are not properly followed severe frame, driveline and/or suspension damage may result. Check for frame and suspension damage prior to installation.

This kit does not require welding. Do not weld on any component. Welding may void the warranty and/or cause the product to fail. If any parts are missing, or for tech assistance; Contact King Off Road Racing Shocks: 714-530-8701 Most important after the install, Feel the difference and have fun.



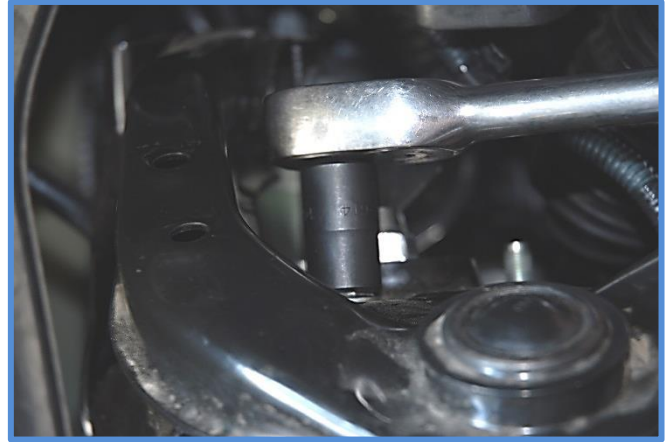
2005+ Nissan Frontier Front Coilover

King Shocks 12472 Edison Way Garden Grove, CA 92841
714-530-8701 www.kingshocks.com

2. Remove the lower shock mount bolt using a 19mm wrench and socket.



3. Remove the upper shock mount nuts using a 14mm socket or wrench.

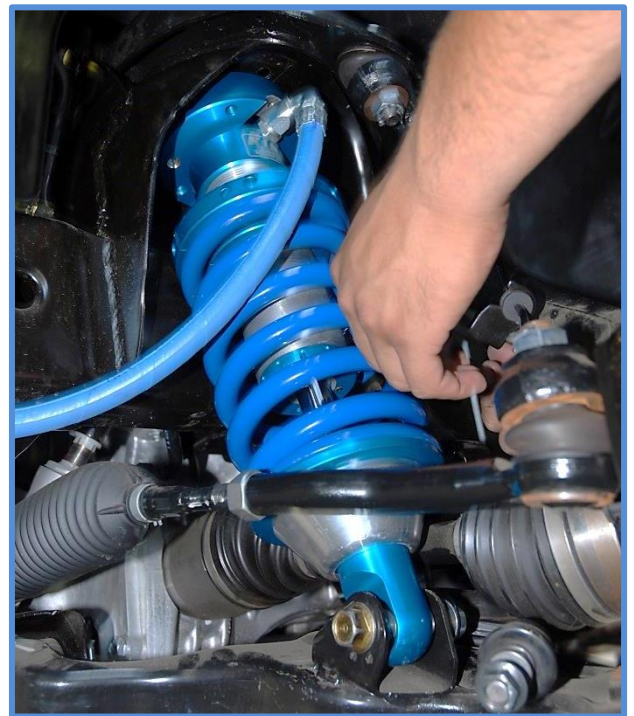


4. To gain more clearance to remove the old shock and to reinstall the new King Coilover shock you must unbolt the ABS bracket using a 12mm wrench or socket. Unbolt ABS bracket and remove the old shock.



5. Be aware that the King shocks are side specific, make sure you are installing the shocks on the proper side. Place shock into position on vehicle (it may be necessary to turn wheel out on the side you are working on to gain more clearance for installing shocks). Use the factory bolt in the lower mount and tighten to factory specs. Use the provided 3/8 bolts in the upper mount and tighten to 35 ft.lbs.

Be sure to use the shorter 3/8" x 3/4" bolt in the front hole above the hose fitting, failure to do so may cause damage to the hose fitting.



IMPORTANT: Read all instructions thoroughly from start to finish before beginning the install. Check parts list and make sure all parts are included in the kit. If the instructions are not properly followed severe frame, driveline and/or suspension damage may result. Check for frame and suspension damage prior to installation.

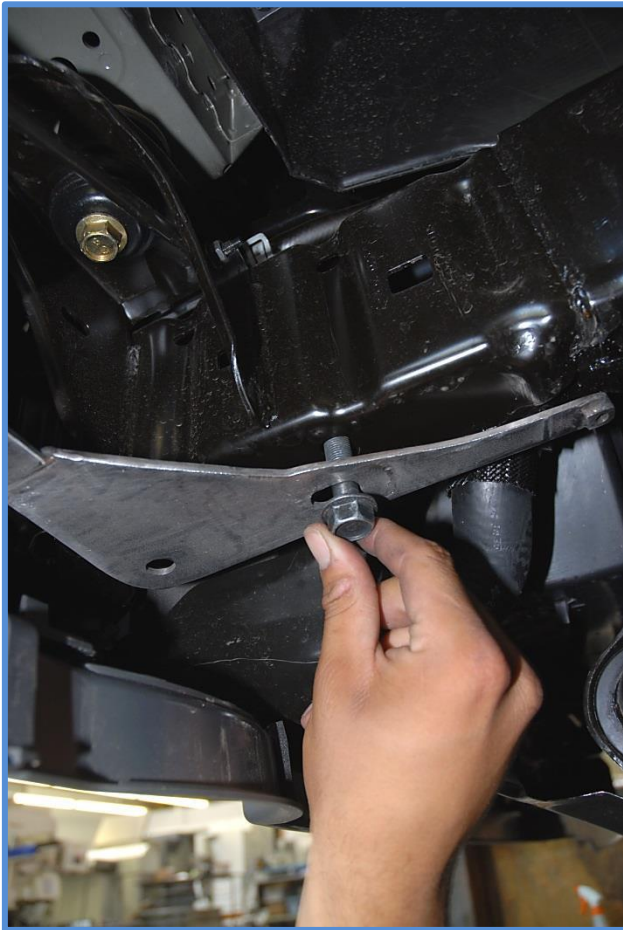
This kit does not require welding. Do not weld on any component. Welding may void the warranty and/or cause the product to fail. If any parts are missing, or for tech assistance; Contact King Off Road Racing Shocks: 714-530-8701 Most important after the install, Feel the difference and have fun.



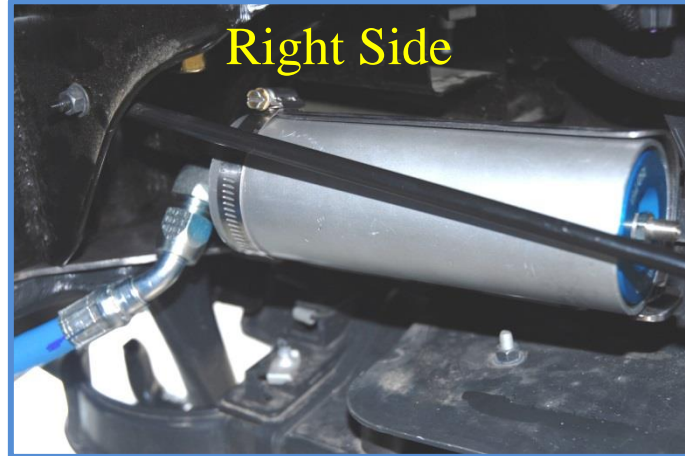
2005+ Nissan Frontier Front Coilover

King Shocks 12472 Edison Way Garden Grove, CA 92841
714-530-8701 www.kingshocks.com

6. **Reservoir Mount:** Some Nissan 4X4 models came with a tow hook on the passenger side. Remove the tow hook using a 17mm socket. Place the bracket up against the frame and reinstall the tow hook with the factory hardware and the supplied hardware for the driver's side.



7. Place the reservoir in the reservoir bracket. Be sure to position the driver's side (Left) reservoir so that the 90-degree hose fitting is at 4 O'clock. NOTE: You may want to rotate the reservoir to best fit so that the hose does not rub against anything that under normal conditions will cause the hose or fitting to fail. Repeat the same process on the passenger side (Right) with the reservoir hose fitting set at 8 O'clock.



IMPORTANT: Read all instructions thoroughly from start to finish before beginning the install. Check parts list and make sure all parts are included in the kit. If the instructions are not properly followed severe frame, driveline and/or suspension damage may result. Check for frame and suspension damage prior to installation.

This kit does not require welding. Do not weld on any component. Welding may void the warranty and/or cause the product to fail. If any parts are missing, or for tech assistance; Contact King Off Road Racing Shocks: 714-530-8701 Most important after the install, Feel the difference and have fun.

**2005+ Nissan Frontier Front Coilover**

King Shocks 12472 Edison Way Garden Grove, CA 92841
714-530-8701 www.kingshocks.com

8. To keep the reservoir hose free from damage and to help keep clear of any potential tire rub. Use the provided hardware, Adel Clamp and 1/4" nut to secure the hose to the frame and reservoir bracket. The bracket should be aligned with a factory hole so that no drilling is necessary. To check for proper clearance, with the vehicle still on the jack stands turn the front wheels from left to right and check to see if the hose is clear of the tires. Make adjustments if necessary.

**DOUBLE CHECK ALL HARDWARE:**

Make sure everything is installed correctly and all hardware is tight before reinstalling tires. Install tires, remove jack stands and lower vehicle to the ground. Recheck all hardware and lug nuts after 100 miles and periodically after that as part of routine maintenance.

Alignment is critical:

A professional alignment must be performed before driving this vehicle at highway speeds. Do not attempt to drive your vehicle after this install without having the alignment readjusted to factory specs!



King Shocks
12472 Edison Way
Garden Grove, CA 92841
www.kingshocks.com

IMPORTANT: Read all instructions thoroughly from start to finish before beginning the install. Check parts list and make sure all parts are included in the kit. If the instructions are not properly followed severe frame, driveline and/or suspension damage may result. Check for frame and suspension damage prior to installation.

This kit does not require welding. Do not weld on any component. Welding may void the warranty and/or cause the product to fail. If any parts are missing, or for tech assistance; Contact King Off Road Racing Shocks: 714-530-8701 Most important after the install, Feel the difference and have fun.