



Toyota Tacoma Rear Bump Stop Kit

King Shocks 12472 Edison Way Garden Grove, CA 92841
714-530-8701 www.kingshocks.com

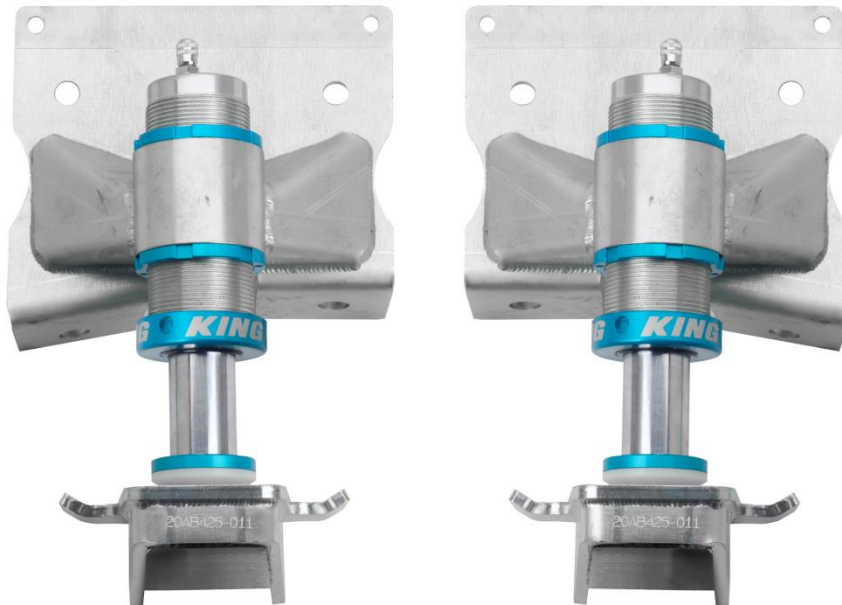
Rear Parts List:

- 2 – 2.0 Compact Bump Stops (BS2120)
- 2 – Bump Stop Brackets (20AB424-129L/130R)
- 2 – Lower Strike Pads (20AB425-110)
- 8 – 7/16 X 1” Bolts (CB4601)
- 8 – 7/16 Nylock Nuts (CN3100)
- 16 – 7/16 SAE Washers (CW1001)

Tools Required:

- Floor Jack/Jack Stands
- Metric Wrench/Socket Set
- Standard Wrench/Socket Set
- Grinder with Cut Off Disc/Grinding Disc
- Air Chisel/Air Hammer
- Drill/Drill Bits

Toyota Tacoma
OEM PERFORMANCE SERIES



REAR: With the vehicle on level ground, block the front tires. Using a floor jack, raise the rear end and support the frame rails with jack stands for safety. Remove rear tires. **NOTE: Never work under an unsupported vehicle.**

1. Remove stock bracket on the frame by removing the rivets. There are several methods for removing rivets depending on the tools you have available. Using the tools of your choice remove the head of the rivet by grinding down, cutting off or air chiseling the head off. Then drill out the remaining piece of the rivet and punch through the frame.



IMPORTANT: Read all instructions thoroughly from start to finish before beginning the install. Check parts list and make sure all parts are included in the kit. If the instructions are not properly followed severe frame, driveline and/or suspension damage may result. Check for frame and suspension damage prior to installation.

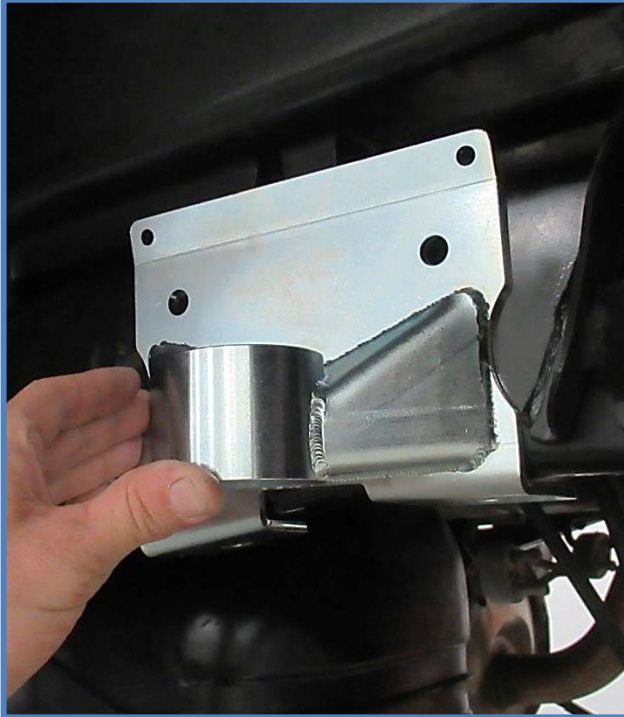
This kit does not require welding. Do not weld on any component. Welding may void the warranty and/or cause the product to fail. If any parts are missing, or for tech assistance; Contact King Off Road Racing Shocks: 714-530-8701 Most important after the install, Feel the difference and have fun.



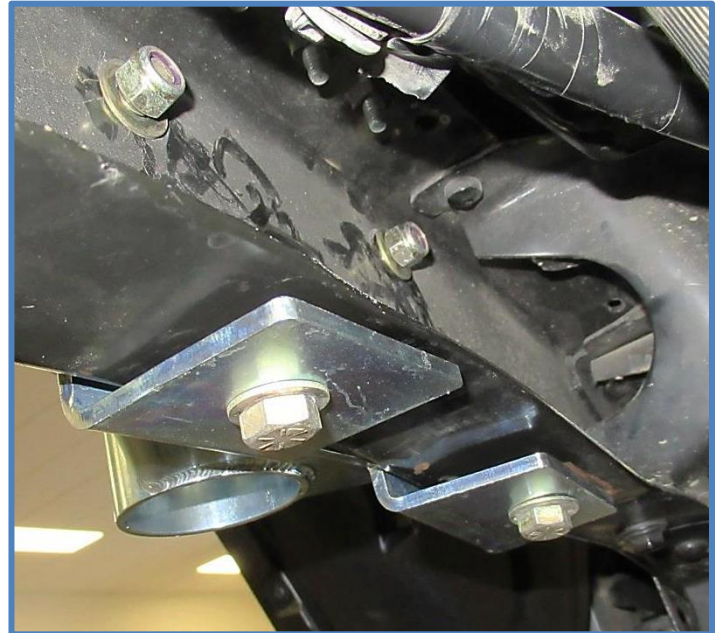
Toyota Tacoma Rear Bump Stop Kit

King Shocks 12472 Edison Way Garden Grove, CA 92841
714-530-8701 www.kingshocks.com

2. Place the bracket in position on the frame.



3. Install the 7/16 X 1" bolts (CB4601) with washers (CW1001). It may be necessary on some vehicles to enlarge one or more of the holes in the frame to install hardware.



4. Tighten the lower bolts first using a 5/8 wrench and socket, then tighten the upper bolts.



IMPORTANT: Read all instructions thoroughly from start to finish before beginning the install. Check parts list and make sure all parts are included in the kit. If the instructions are not properly followed severe frame, driveline and/or suspension damage may result. Check for frame and suspension damage prior to installation.

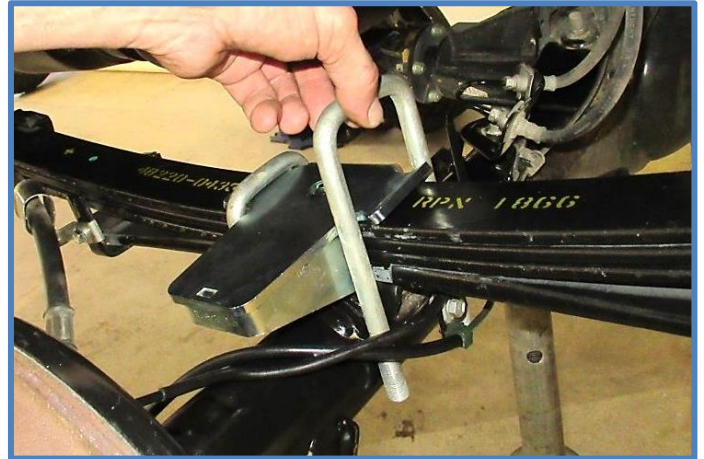
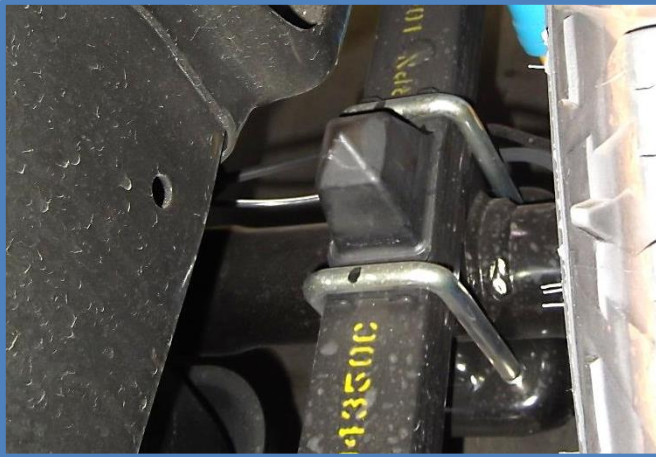
This kit does not require welding. Do not weld on any component. Welding may void the warranty and/or cause the product to fail. If any parts are missing, or for tech assistance; Contact King Off Road Racing Shocks: 714-530-8701 Most important after the install, Feel the difference and have fun.



Toyota Tacoma Rear Bump Stop Kit

King Shocks 12472 Edison Way Garden Grove, CA 92841
714-530-8701 www.kingshocks.com

5. Install the lower strike pad. Place a jack under the axle and remove the u-bolts (do one side at a time) then remove the factory rubber bump stop. Place the strike pad over the leaf springs as shown below. Replace the u-bolts and tighten to factory specs.



IMPORTANT: Read all instructions thoroughly from start to finish before beginning the install. Check parts list and make sure all parts are included in the kit. If the instructions are not properly followed severe frame, driveline and/or suspension damage may result. Check for frame and suspension damage prior to installation.

This kit does not require welding. Do not weld on any component. Welding may void the warranty and/or cause the product to fail. If any parts are missing, or for tech assistance; Contact King Off Road Racing Shocks: 714-530-8701 Most important after the install, Feel the difference and have fun.



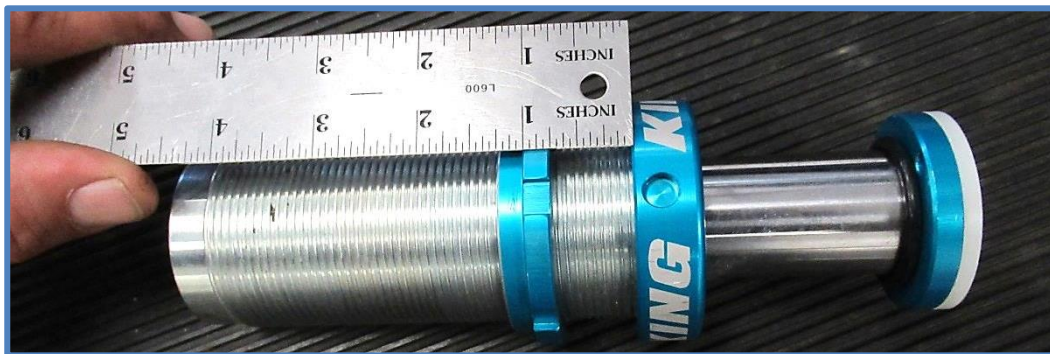
Toyota Tacoma Rear Bump Stop Kit

King Shocks 12472 Edison Way Garden Grove, CA 92841
714-530-8701 www.kingshocks.com

6. Install the bump stop. First remove the upper lock ring and make sure the set screws are backed out on both lock rings.



7. Next... For stock height vehicles with factory leaf springs, no lift blocks and no other modifications you will set the lower lock ring to 3/4" from the cap as shown below. This is a good starting point but you should always bottom out the suspension and set the bump stops based on your specific set up, each vehicle will vary and it is ultimately up to the installer to determine where to set the bump stop especially if any modifications have been made to the leaf springs, shackles, ride height, etc...



8. Now place the bump stop in the bracket and thread the upper lock ring onto the bumpstop.



IMPORTANT: Read all instructions thoroughly from start to finish before beginning the install. Check parts list and make sure all parts are included in the kit. If the instructions are not properly followed severe frame, driveline and/or suspension damage may result. Check for frame and suspension damage prior to installation.

This kit does not require welding. Do not weld on any component. Welding may void the warranty and/or cause the product to fail. If any parts are missing, or for tech assistance; Contact King Off Road Racing Shocks: 714-530-8701 Most important after the install, Feel the difference and have fun.



Toyota Tacoma Rear Bump Stop Kit

King Shocks 12472 Edison Way Garden Grove, CA 92841
714-530-8701 www.kingshocks.com

9. Tighten the lock rings using a hammer and screwdriver or punch then tighten the set screws.



Final install should look similar to the photo on the left.

DOUBLE CHECK ALL HARDWARE:

Make sure everything is installed correctly and all hardware is tight before reinstalling tires. Install tires, remove jack stands and lower vehicle to the ground. Recheck all hardware and lug nuts after 100 miles and periodically after that as part of routine maintenance.

IMPORTANT: Read all instructions thoroughly from start to finish before beginning the install. Check parts list and make sure all parts are included in the kit. If the instructions are not properly followed severe frame, driveline and/or suspension damage may result. Check for frame and suspension damage prior to installation.

This kit does not require welding. Do not weld on any component. Welding may void the warranty and/or cause the product to fail. If any parts are missing, or for tech assistance; Contact King Off Road Racing Shocks: 714-530-8701 Most important after the install, Feel the difference and have fun.



Toyota Tacoma Rear Bump Stop Kit

King Shocks 12472 Edison Way Garden Grove, CA 92841
714-530-8701 www.kingshocks.com

Reservoir mounting options for vehicles equipped with King Shocks...

Option 1: If you have King's 2.5 smoothie with 2.5 standard reservoir you can purchase the reservoir adaptor bracket kit- Part # KH02-132

Reservoir adaptor bracket attaches to the two holes at the top of the bump stop bracket. Place the reservoir bracket behind the bump stop bracket and secure with the 1/4 X 1/2" BHCS (CB2420) included in the kit. Place the reservoir in the cradle and reuse your hose clamps to mount the reservoir.



IMPORTANT: Read all instructions thoroughly from start to finish before beginning the install. Check parts list and make sure all parts are included in the kit. If the instructions are not properly followed severe frame, driveline and/or suspension damage may result. Check for frame and suspension damage prior to installation.

This kit does not require welding. Do not weld on any component. Welding may void the warranty and/or cause the product to fail. If any parts are missing, or for tech assistance; Contact King Off Road Racing Shocks: 714-530-8701 Most important after the install, Feel the difference and have fun.

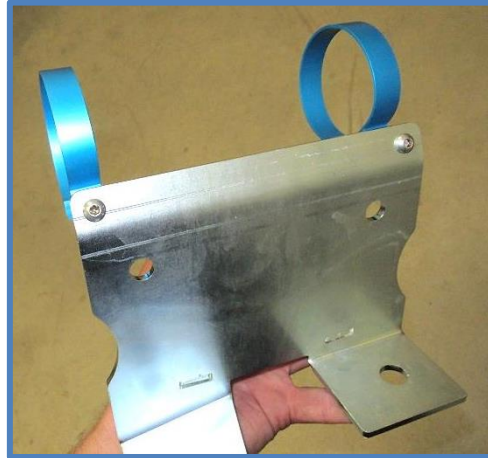
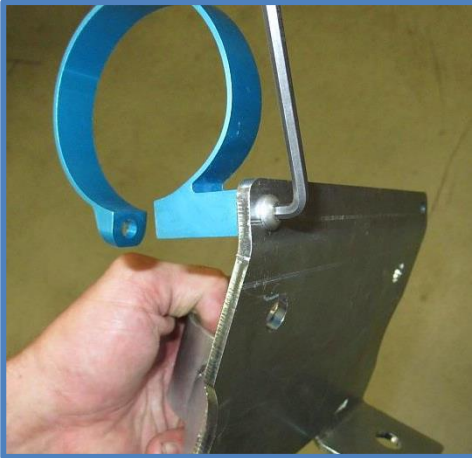


Toyota Tacoma Rear Bump Stop Kit

King Shocks 12472 Edison Way Garden Grove, CA 92841
714-530-8701 www.kingshocks.com

Reservoir mounting options for vehicles equipped with King Shocks...

Option 2: If you have King's 3.0 Bypass kit then you will use the clamps from your kit and attach the clamps to the bump stop bracket using the 1/4 X 1/2" BHCS (CB2420). Attach the clamps as shown and install the reservoir.



IMPORTANT: Read all instructions thoroughly from start to finish before beginning the install. Check parts list and make sure all parts are included in the kit. If the instructions are not properly followed severe frame, driveline and/or suspension damage may result. Check for frame and suspension damage prior to installation.

This kit does not require welding. Do not weld on any component. Welding may void the warranty and/or cause the product to fail. If any parts are missing, or for tech assistance; Contact King Off Road Racing Shocks: 714-530-8701 Most important after the install, Feel the difference and have fun.