



## 2019+ Mercedes Sprinter 2500 2WD/4WD 2.5 Rear Shocks

King Shocks 12472 Edison Way Garden Grove, CA 92841  
714-530-8701 [www.kingshocks.com](http://www.kingshocks.com)

### Rear Parts List:

2 – 2.5 Piggyback Shocks (25001-344A-2wd or 25001-325A-4wd)

### Tools Required:

Floor Jack/Jack Stands  
Metric Wrench/Socket Set

**Mercedes Sprinter 2500**  
**DEM PERFORMANCE SERIES**



2wd – 25001-344A

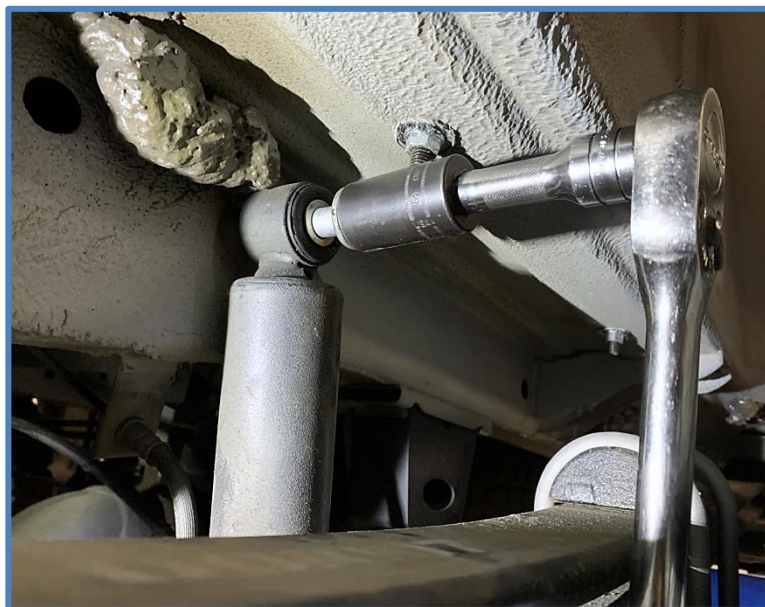


4wd – 25001-325A

**REAR:** With the vehicle on level ground, block the front tires. Using a floor jack, raise the rear end and support the frame rails with jack stands for safety. **NOTE: Never work under an unsupported vehicle.**

### Sprinter 2500 4WD Rear Installation.

1. Remove the factory shocks using an 18mm wrench/socket on the lower bolt and a 21mm socket on the upper bolt. First remove the nut and bolt from the lower mount then remove the bolt from the upper mount.



**IMPORTANT:** Read all instructions thoroughly from start to finish before beginning the install. Check parts list and make sure all parts are included in the kit. If the instructions are not properly followed severe frame, driveline and/or suspension damage may result. Check for frame and suspension damage prior to installation.

This kit does not require welding. Do not weld on any component. Welding may void the warranty and/or cause the product to fail. If any parts are missing, or for tech assistance; Contact King Off Road Racing Shocks: 714-530-8701 Most important after the install, Feel the difference and have fun.



2019+ Mercedes Sprinter 2500 2WD/4WD 2.5 Rear Shocks

King Shocks 12472 Edison Way Garden Grove, CA 92841  
714-530-8701 [www.kingshocks.com](http://www.kingshocks.com)

2. Install King Shocks reusing the factory hardware. Shocks are side specific and need to be oriented with the long offset spacer towards the frame and reservoirs towards the rear of the vehicle. See Photos...



3. Install the factory bolt in the upper mount and tighten to factory specs.



**IMPORTANT:** Read all instructions thoroughly from start to finish before beginning the install. Check parts list and make sure all parts are included in the kit. If the instructions are not properly followed severe frame, driveline and/or suspension damage may result. Check for frame and suspension damage prior to installation.

This kit does not require welding. Do not weld on any component. Welding may void the warranty and/or cause the product to fail. If any parts are missing, or for tech assistance; Contact King Off Road Racing Shocks: 714-530-8701 Most important after the install, Feel the difference and have fun.



2019+ Mercedes Sprinter 2500 2WD/4WD 2.5 Rear Shocks

King Shocks 12472 Edison Way Garden Grove, CA 92841  
714-530-8701 [www.kingshocks.com](http://www.kingshocks.com)

4. Place rod end in the lower mount, insert factory bolt, install nut and tighten to factory specs.



**DOUBLE CHECK ALL HARDWARE:**

Make sure everything is installed correctly and all hardware is tight. Remove jack stands and lower vehicle to the ground. Recheck all hardware after 100 miles and periodically after that as part of routine maintenance.

**IMPORTANT:** Read all instructions thoroughly from start to finish before beginning the install. Check parts list and make sure all parts are included in the kit. If the instructions are not properly followed severe frame, driveline and/or suspension damage may result. Check for frame and suspension damage prior to installation.

This kit does not require welding. Do not weld on any component. Welding may void the warranty and/or cause the product to fail. If any parts are missing, or for tech assistance; Contact King Off Road Racing Shocks: 714-530-8701 Most important after the install, Feel the difference and have fun.

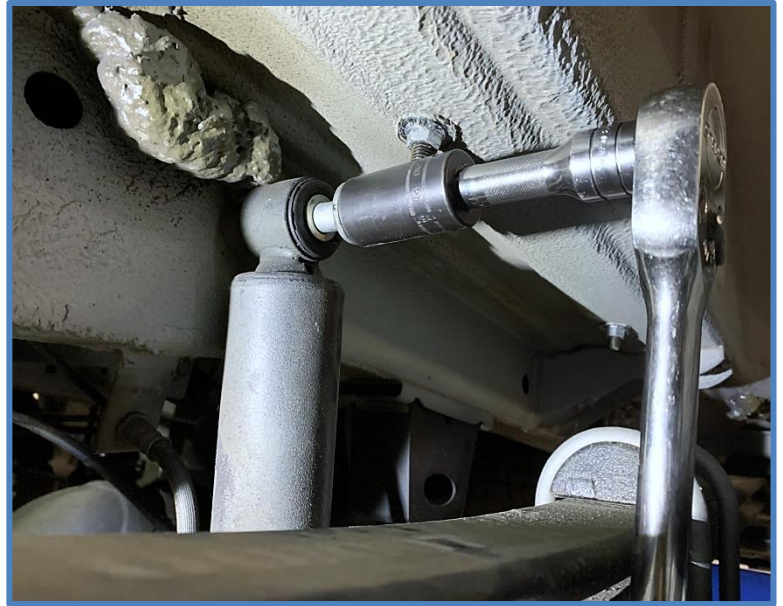


## 2019+ Mercedes Sprinter 2500 2WD/4WD 2.5 Rear Shocks

King Shocks 12472 Edison Way Garden Grove, CA 92841  
714-530-8701 [www.kingshocks.com](http://www.kingshocks.com)

### Sprinter 2500 2WD Rear Installation.

1. Remove the factory shocks using an 18mm wrench/socket on the lower bolt and a 21mm socket on the upper bolt. First remove the nut and bolt from the lower mount then remove the bolt from the upper mount.



2. Install King Shocks reusing the factory hardware. Shocks are side specific and need to be oriented with the long offset spacer towards the frame and reservoirs towards the front of the vehicle. See Photos...



Brake line will be between shock and reservoir.

**IMPORTANT:** Read all instructions thoroughly from start to finish before beginning the install. Check parts list and make sure all parts are included in the kit. If the instructions are not properly followed severe frame, driveline and/or suspension damage may result. Check for frame and suspension damage prior to installation.

This kit does not require welding. Do not weld on any component. Welding may void the warranty and/or cause the product to fail. If any parts are missing, or for tech assistance; Contact King Off Road Racing Shocks: 714-530-8701 Most important after the install, Feel the difference and have fun.



2019+ Mercedes Sprinter 2500 2WD/4WD 2.5 Rear Shocks

King Shocks 12472 Edison Way Garden Grove, CA 92841  
714-530-8701 [www.kingshocks.com](http://www.kingshocks.com)

3. Install the factory bolt in the upper mount and tighten to factory specs.



4. Place rod end in the lower mount, insert factory bolt, install nut and tighten to factory specs.



**IMPORTANT:** Read all instructions thoroughly from start to finish before beginning the install. Check parts list and make sure all parts are included in the kit. If the instructions are not properly followed severe frame, driveline and/or suspension damage may result. Check for frame and suspension damage prior to installation.

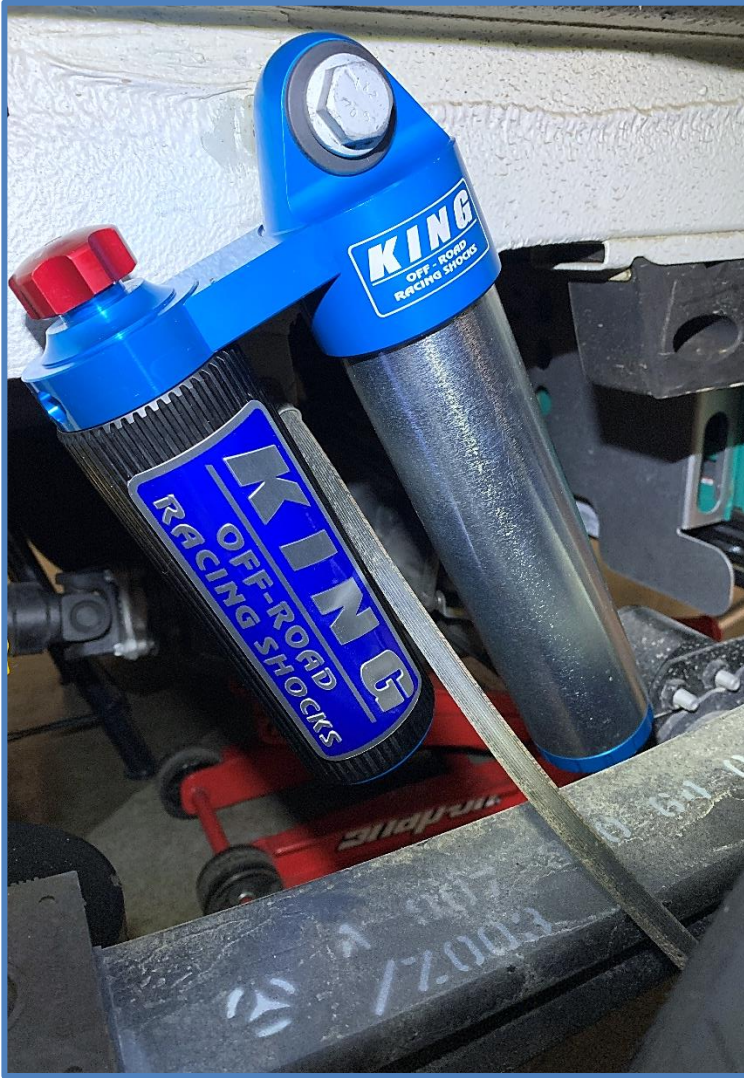
This kit does not require welding. Do not weld on any component. Welding may void the warranty and/or cause the product to fail. If any parts are missing, or for tech assistance; Contact King Off Road Racing Shocks: 714-530-8701 Most important after the install, Feel the difference and have fun.



2019+ Mercedes Sprinter 2500 2WD/4WD 2.5 Rear Shocks

King Shocks 12472 Edison Way Garden Grove, CA 92841  
714-530-8701 [www.kingshocks.com](http://www.kingshocks.com)

LEFT



RIGHT



**DOUBLE CHECK ALL HARDWARE:**

Make sure everything is installed correctly and all hardware is tight. Remove jack stands and lower vehicle to the ground. Recheck all hardware after 100 miles and periodically after that as part of routine maintenance.



**IMPORTANT:** Read all instructions thoroughly from start to finish before beginning the install. Check parts list and make sure all parts are included in the kit. If the instructions are not properly followed severe frame, driveline and/or suspension damage may result. Check for frame and suspension damage prior to installation.

This kit does not require welding. Do not weld on any component. Welding may void the warranty and/or cause the product to fail. If any parts are missing, or for tech assistance; Contact King Off Road Racing Shocks: 714-530-8701 Most important after the install, Feel the difference and have fun.