



2005+ Ford F550 2.5 Rear Shocks

King Shocks 12472 Edison Way Garden Grove, CA 92841
714-530-8701 www.kingshocks.com

Rear Parts List:

2 – 2.5 Rear Shocks (25001-398)

Tools Required:

Floor Jack/Jack Stands
Metric Wrench/Socket Set
Standard Wrench/Socket Set

Ford F550
DEM PERFORMANCE SERIES



REAR: With the vehicle on level ground, block the front tires. Using a floor jack, raise the rear end and support the frame rails with jack stands for safety. **NOTE: Never work under an unsupported vehicle.**

1. Remove existing shocks by removing the lower shock mounting nut and bolt using a 21mm wrench/socket on the nut and an 18mm wrench or socket on the bolt head. Then remove the upper shock mounting nut using an 18mm wrench or socket and slide shock off the mounting stud.



IMPORTANT: Read all instructions thoroughly from start to finish before beginning the install. Check parts list and make sure all parts are included in the kit. If the instructions are not properly followed severe frame, driveline and/or suspension damage may result. Check for frame and suspension damage prior to installation.

This kit does not require welding. Do not weld on any component. Welding may void the warranty and/or cause the product to fail. If any parts are missing, or for tech assistance; Contact King Off Road Racing Shocks: 714-530-8701 Most important after the install, Feel the difference and have fun.



2005+ Ford F550 2.5 Rear Shocks

King Shocks 12472 Edison Way Garden Grove, CA 92841
714-530-8701 www.kingshocks.com

2. When installing King Shocks, make sure the longer spacer is towards the frame as shown below.

Longer spacer should be installed towards frame.



Factory nut will go on side with short bearing spacer.



3. Ford F550 trucks come in a variety of configurations, these instructions show the most common stock chassis configuration. These King Shocks replace the factory shocks that have a compressed dimension of about 15.5" and about 25.5" extended. Check the dimensions of the shocks you are replacing to make sure these shocks will work before installing. Install King Shocks with the reservoir facing forward on the right side and facing inward on the left side. (see final install pictures). Push the shock onto the top mounting stud with the longer spacer towards the frame.



IMPORTANT: Read all instructions thoroughly from start to finish before beginning the install. Check parts list and make sure all parts are included in the kit. If the instructions are not properly followed severe frame, driveline and/or suspension damage may result. Check for frame and suspension damage prior to installation.

This kit does not require welding. Do not weld on any component. Welding may void the warranty and/or cause the product to fail. If any parts are missing, or for tech assistance; Contact King Off Road Racing Shocks: 714-530-8701 Most important after the install, Feel the difference and have fun.



2005+ Ford F550 2.5 Rear Shocks

King Shocks 12472 Edison Way Garden Grove, CA 92841
714-530-8701 www.kingshocks.com

4. Thread the factory nut onto the mounting stud and tighten to factory specs.



5. Install the factory bolt in the lower shock mount and tighten to factory specs.



IMPORTANT: Read all instructions thoroughly from start to finish before beginning the install. Check parts list and make sure all parts are included in the kit. If the instructions are not properly followed severe frame, driveline and/or suspension damage may result. Check for frame and suspension damage prior to installation.

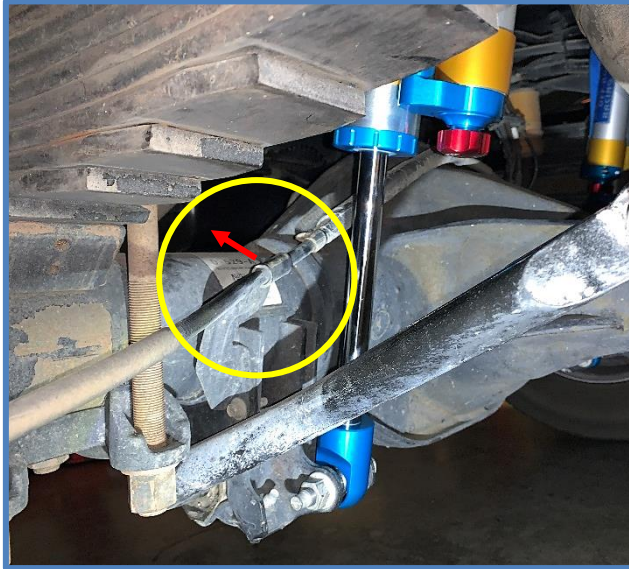
This kit does not require welding. Do not weld on any component. Welding may void the warranty and/or cause the product to fail. If any parts are missing, or for tech assistance; Contact King Off Road Racing Shocks: 714-530-8701 Most important after the install, Feel the difference and have fun.



2005+ Ford F550 2.5 Rear Shocks

King Shocks 12472 Edison Way Garden Grove, CA 92841
714-530-8701 www.kingshocks.com

6. Check the parking brake cable bracket to ensure there is no interference with the shock. Push or bend bracket away from shock.

**DOUBLE CHECK ALL HARDWARE:**

Make sure everything is installed correctly and all hardware is tight. Remove jack stands and lower vehicle to the ground. Recheck all hardware after 100 miles and periodically after that as part of routine maintenance.

IMPORTANT: Read all instructions thoroughly from start to finish before beginning the install. Check parts list and make sure all parts are included in the kit. If the instructions are not properly followed severe frame, driveline and/or suspension damage may result. Check for frame and suspension damage prior to installation.

This kit does not require welding. Do not weld on any component. Welding may void the warranty and/or cause the product to fail. If any parts are missing, or for tech assistance; Contact King Off Road Racing Shocks: 714-530-8701 Most important after the install, Feel the difference and have fun.