



2012+ Ford Ranger T6/PX3 2.5 Rear Shocks

King Shocks 12472 Edison Way Garden Grove, CA 92841
714-530-8701 www.kingshocks.com

Rear Parts List:

2 – 2.5 Rear Shocks (25001-316)

Tools Required:

Floor Jack/Jack Stands
Metric Wrench/Socket Set
Standard Wrench/Socket Set

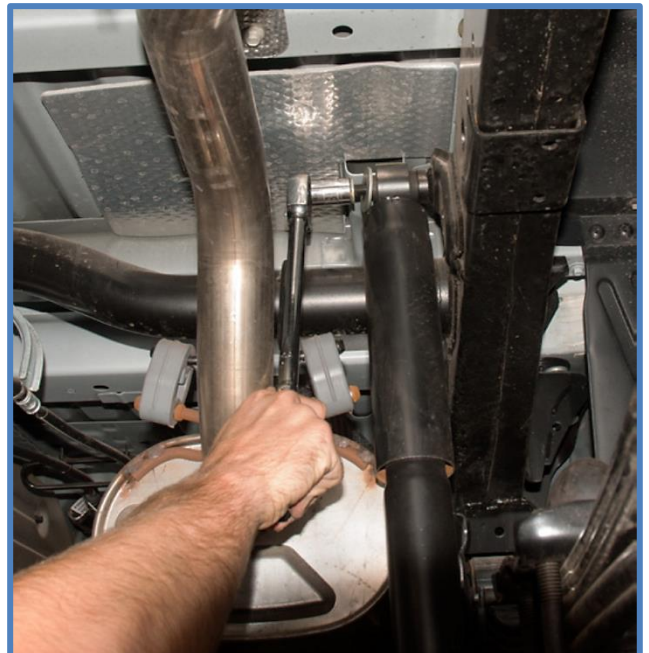
2012+ Ford Ranger T6/PX3
DEM PERFORMANCE SERIES



REAR: With the vehicle on level ground, block the front tires. Using a floor jack, raise the rear end and support the frame rails with jack stands for safety. **NOTE: Never work under an unsupported vehicle.**

1. Remove factory shocks. Start by removing the lower mounting bolt.

2. Remove the nut from the upper mounting stud. Save all factory hardware, it will be reused to install new shocks.



IMPORTANT: Read all instructions thoroughly from start to finish before beginning the install. Check parts list and make sure all parts are included in the kit. If the instructions are not properly followed severe frame, driveline and/or suspension damage may result. Check for frame and suspension damage prior to installation.

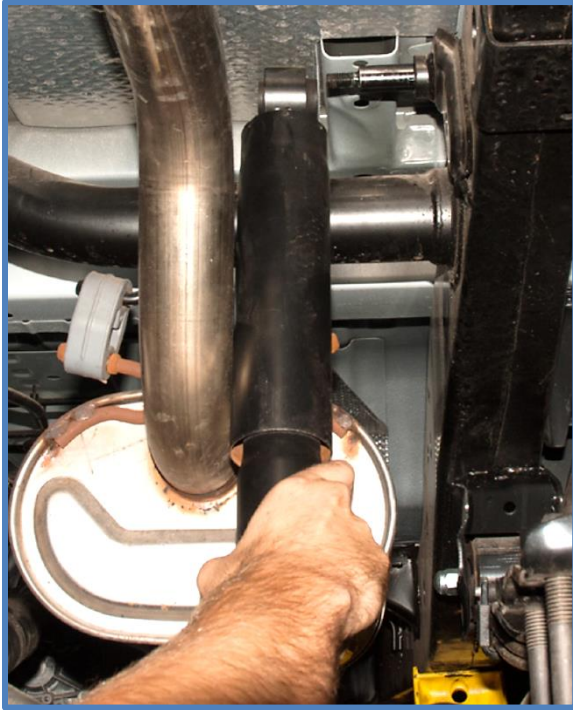
This kit does not require welding. Do not weld on any component. Welding may void the warranty and/or cause the product to fail. If any parts are missing, or for tech assistance; Contact King Off Road Racing Shocks: 714-530-8701 Most important after the install, Feel the difference and have fun.



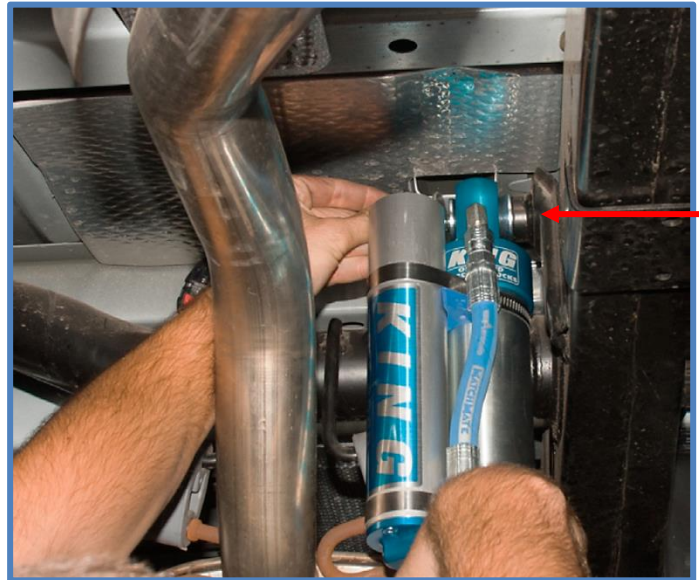
2012+ Ford Ranger T6/PX3 2.5 Rear Shocks

King Shocks 12472 Edison Way Garden Grove, CA 92841
714-530-8701 www.kingshocks.com

3. Remove factory or existing shocks.



4. Install King Shocks. Shocks are side specific, make sure you are installing shocks on the proper side. Place shock on upper mounting stud with the longer bearing spacer towards the frame, install factory nut and tighten to factory specs.



5. Place the rod end in the lower shock mount with the longer bearing spacer towards the frame and install the factory bolt. Tighten lower mounting bolts to factory specs. Make sure long spacers are towards the frame.



IMPORTANT: Read all instructions thoroughly from start to finish before beginning the install. Check parts list and make sure all parts are included in the kit. If the instructions are not properly followed severe frame, driveline and/or suspension damage may result. Check for frame and suspension damage prior to installation.

This kit does not require welding. Do not weld on any component. Welding may void the warranty and/or cause the product to fail. If any parts are missing, or for tech assistance; Contact King Off Road Racing Shocks: 714-530-8701 Most important after the install, Feel the difference and have fun.



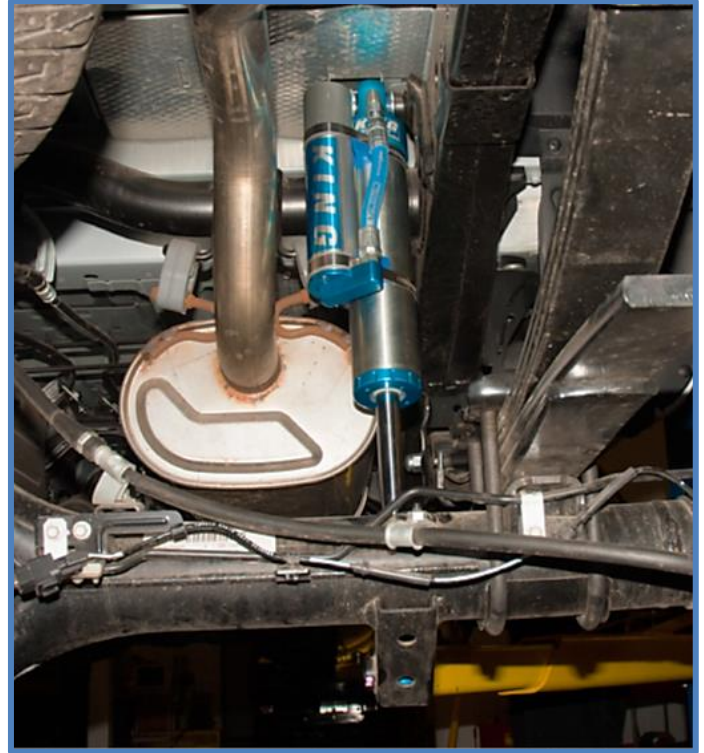
2012+ Ford Ranger T6/PX3 2.5 Rear Shocks

King Shocks 12472 Edison Way Garden Grove, CA 92841
714-530-8701 www.kingshocks.com

Left Side



Right Side



DOUBLE CHECK ALL HARDWARE:

Make sure everything is installed correctly and all hardware is tight. Remove jack stands and lower vehicle to the ground. Recheck all hardware after 100 miles and periodically after that as part of routine maintenance.



King Shocks
12472 Edison Way
Garden Grove, CA 92841
www.kingshocks.com

IMPORTANT: Read all instructions thoroughly from start to finish before beginning the install. Check parts list and make sure all parts are included in the kit. If the instructions are not properly followed severe frame, driveline and/or suspension damage may result. Check for frame and suspension damage prior to installation.

This kit does not require welding. Do not weld on any component. Welding may void the warranty and/or cause the product to fail. If any parts are missing, or for tech assistance; Contact King Off Road Racing Shocks: 714-530-8701 Most important after the install, Feel the difference and have fun.