



## 2005-2023 Mitsubishi L200 2.5 Front Coilover

King Shocks 12472 Edison Way Garden Grove, CA 92841  
714-530-8701 [www.kingshocks.com](http://www.kingshocks.com)

### Front Parts List:

- 2 – 2.5 Front Coilovers (25001-317)
- 2 – Reservoir Brackets (25048-119)
- 1 – Hardware Kit (KH02-176)

### Tools Required:

- Floor Jack/Jack Stands
- Metric Wrench/Socket Set
- Standard Wrench/Socket Set

**Mitsubishi L200**  
OEM PERFORMANCE SERIES



**This kit does not fit with factory upper control arms.**

**Factory wheels may have clearance issues. Factory wheels with larger tires may have clearance issues.**

**FRONT:** With the vehicle on level ground, set the emergency brake and block the rear tires. Using a floor jack, raise the front end and support the frame rails with jack stands for safety. Remove front tires. **NOTE: Never work under an unsupported vehicle.**

1. Begin removing factory shocks by first removing the nuts from the upper mount.



**IMPORTANT:** Read all instructions thoroughly from start to finish before beginning the install. Check parts list and make sure all parts are included in the kit. If the instructions are not properly followed severe frame, driveline and/or suspension damage may result. Check for frame and suspension damage prior to installation.

This kit does not require welding. Do not weld on any component. Welding may void the warranty and/or cause the product to fail. If any parts are missing, or for tech assistance; Contact King Off Road Racing Shocks: 714-530-8701 Most important after the install, Feel the difference and have fun.



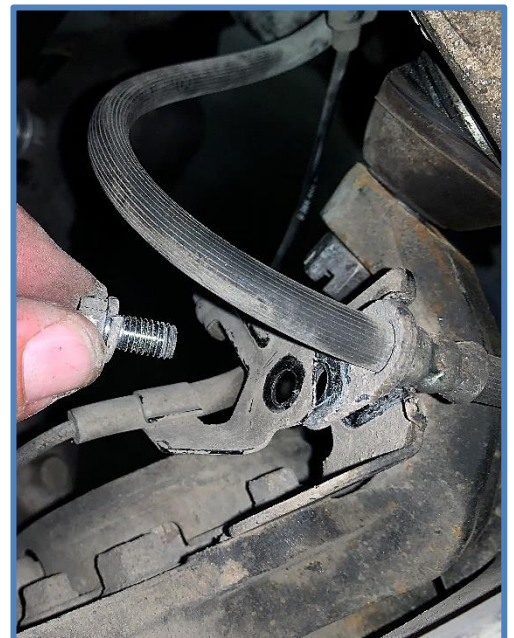
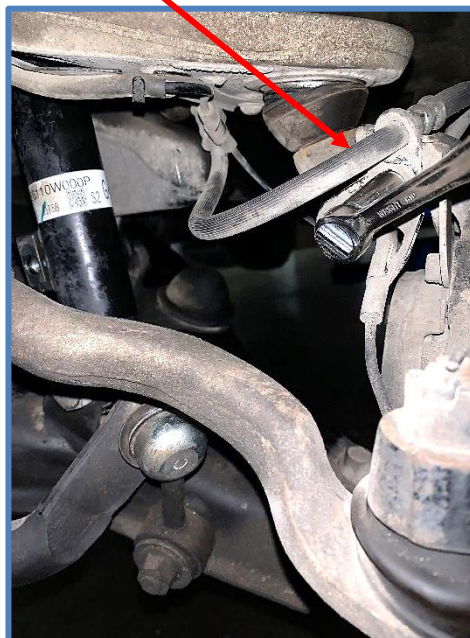
2005-2023 Mitsubishi L200 2.5 Front Coilover

King Shocks 12472 Edison Way Garden Grove, CA 92841  
714-530-8701 [www.kingshocks.com](http://www.kingshocks.com)

2. Remove nut from lower mount. Leave bolt in until you are ready to remove shock.



3. Unbolt brake/ABS lines from shock and knuckle.



**IMPORTANT:** Read all instructions thoroughly from start to finish before beginning the install. Check parts list and make sure all parts are included in the kit. If the instructions are not properly followed severe frame, driveline and/or suspension damage may result. Check for frame and suspension damage prior to installation.

This kit does not require welding. Do not weld on any component. Welding may void the warranty and/or cause the product to fail. If any parts are missing, or for tech assistance; Contact King Off Road Racing Shocks: 714-530-8701 Most important after the install, Feel the difference and have fun.



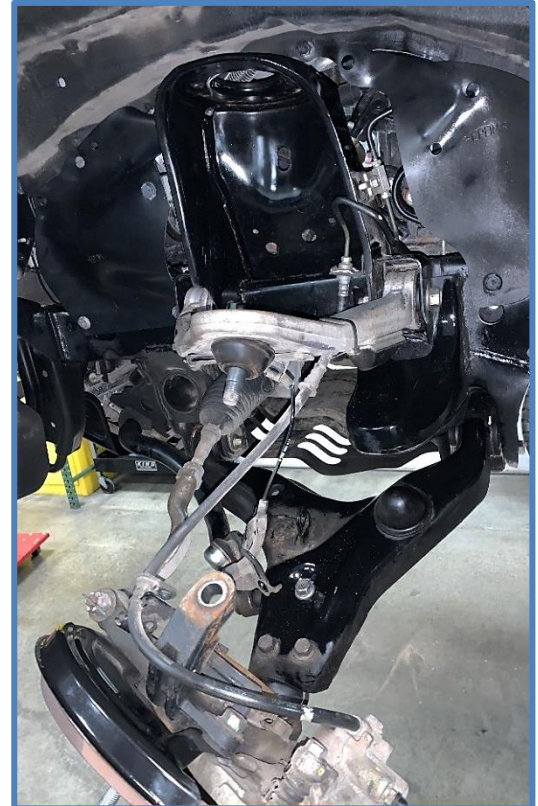
2005-2023 Mitsubishi L200 2.5 Front Coilover

King Shocks 12472 Edison Way Garden Grove, CA 92841  
714-530-8701 [www.kingshocks.com](http://www.kingshocks.com)

4. Disconnect upper control arm – Remove cotter pin, remove nut and separate control arm from knuckle.



5. Remove shocks from vehicle.



**Please Be Advised** – Pictures shown in these instructions show an aftermarket upper control arm. Aftermarket, modified or custom upper control arms are required to fit King Shocks coilovers.

**IMPORTANT:** Read all instructions thoroughly from start to finish before beginning the install. Check parts list and make sure all parts are included in the kit. If the instructions are not properly followed severe frame, driveline and/or suspension damage may result. Check for frame and suspension damage prior to installation.

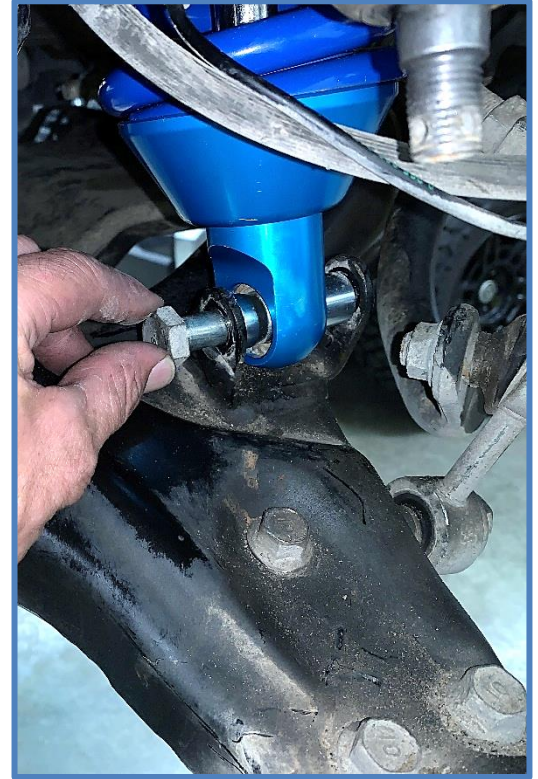
This kit does not require welding. Do not weld on any component. Welding may void the warranty and/or cause the product to fail. If any parts are missing, or for tech assistance; Contact King Off Road Racing Shocks: 714-530-8701 Most important after the install, Feel the difference and have fun.



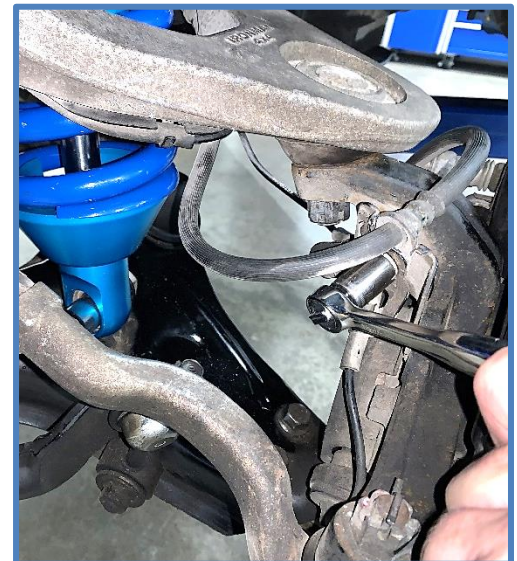
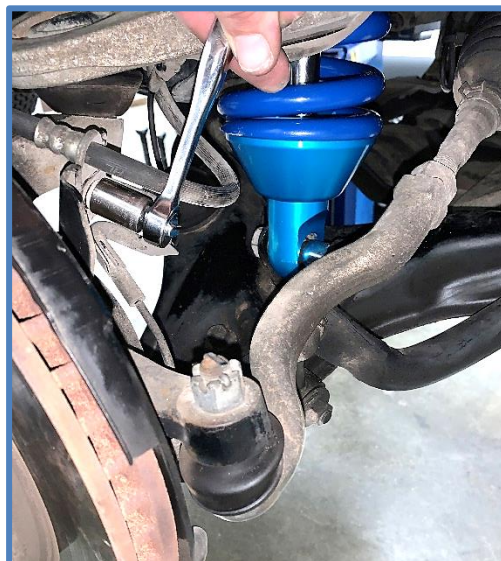
## 2005-2023 Mitsubishi L200 2.5 Front Coilover

King Shocks 12472 Edison Way Garden Grove, CA 92841  
714-530-8701 [www.kingshocks.com](http://www.kingshocks.com)

6. **Install King Shocks** – Be aware that the shocks are side specific. Make sure you are installing shocks on the correct side. Shocks should be installed with the hose and reservoir towards the front of the vehicle and the offset spacer on the rod end should be facing forward also. Place the shock in position on the vehicle. Install factory hardware in the lower mount. Tighten lower mounting bolt to factory specs.



7. Reconnect upper control arm and tighten nut to factory specs. Install new cotter pin. Reroute brake/ABS lines and attach to knuckle. Secure brake lines to upper control arm with zip ties.



**IMPORTANT:** Read all instructions thoroughly from start to finish before beginning the install. Check parts list and make sure all parts are included in the kit. If the instructions are not properly followed severe frame, driveline and/or suspension damage may result. Check for frame and suspension damage prior to installation.

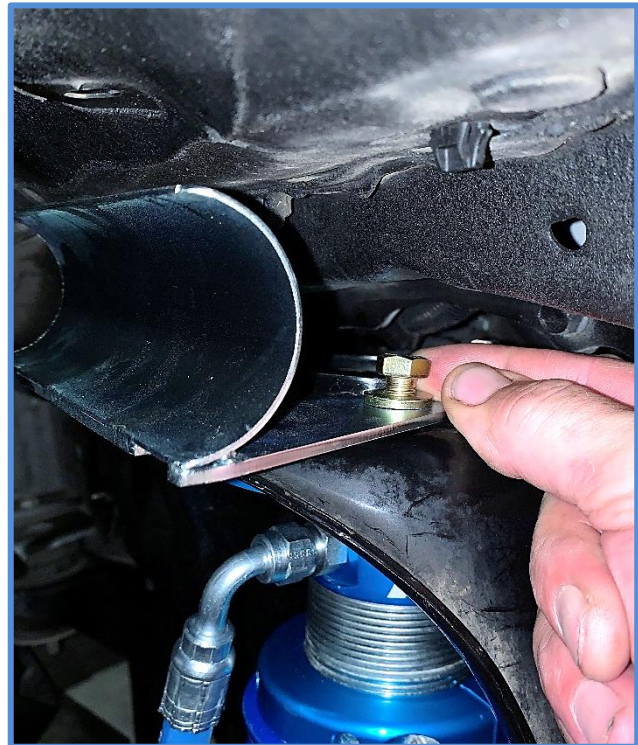
This kit does not require welding. Do not weld on any component. Welding may void the warranty and/or cause the product to fail. If any parts are missing, or for tech assistance; Contact King Off Road Racing Shocks: 714-530-8701 Most important after the install, Feel the difference and have fun.



## 2005-2023 Mitsubishi L200 2.5 Front Coilover

King Shocks 12472 Edison Way Garden Grove, CA 92841  
714-530-8701 [www.kingshocks.com](http://www.kingshocks.com)

8. **Install reservoir brackets and upper mounting bolts** – Place the reservoir bracket on top of the upper mount. Install the 3/8 x 1” bolts (CB4701) with washers (CW1701) through reservoir bracket and upper mount and thread into the upper mounting plate. Depending on the year of your vehicle the reservoir bracket will line up with either the one centered hole or the two outside holes. Torque bolts to 35ft-lbs.



**IMPORTANT:** Read all instructions thoroughly from start to finish before beginning the install. Check parts list and make sure all parts are included in the kit. If the instructions are not properly followed severe frame, driveline and/or suspension damage may result. Check for frame and suspension damage prior to installation.

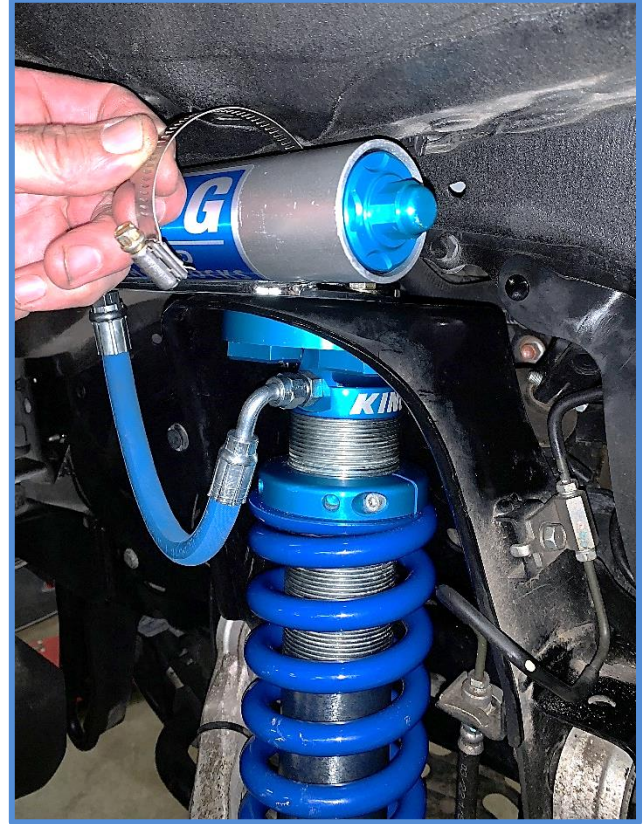
This kit does not require welding. Do not weld on any component. Welding may void the warranty and/or cause the product to fail. If any parts are missing, or for tech assistance; Contact King Off Road Racing Shocks: 714-530-8701 Most important after the install, Feel the difference and have fun.



2005-2023 Mitsubishi L200 2.5 Front Coilover

King Shocks 12472 Edison Way Garden Grove, CA 92841  
714-530-8701 [www.kingshocks.com](http://www.kingshocks.com)

9. Place reservoir in the reservoir bracket as shown below and secure reservoir using provided hose clamps.



**IMPORTANT:** Read all instructions thoroughly from start to finish before beginning the install. Check parts list and make sure all parts are included in the kit. If the instructions are not properly followed severe frame, driveline and/or suspension damage may result. Check for frame and suspension damage prior to installation.

This kit does not require welding. Do not weld on any component. Welding may void the warranty and/or cause the product to fail. If any parts are missing, or for tech assistance; Contact King Off Road Racing Shocks: 714-530-8701 Most important after the install, Feel the difference and have fun.



2005-2023 Mitsubishi L200 2.5 Front Coilover

King Shocks 12472 Edison Way Garden Grove, CA 92841  
714-530-8701 [www.kingshocks.com](http://www.kingshocks.com)

**Final installation should look similar to photos below.**



**DOUBLE CHECK ALL HARDWARE:**

Make sure everything is installed correctly and all hardware is tight before reinstalling tires. Install tires, remove jack stands and lower vehicle to the ground. Recheck all hardware and lug nuts after 100 miles and periodically after that as part of routine maintenance.

**Alignment is critical:**

A professional alignment must be performed before driving this vehicle at highway speeds. Do not attempt to drive your vehicle after this installation without having the alignment readjusted to factory specs!

**IMPORTANT:** Read all instructions thoroughly from start to finish before beginning the install. Check parts list and make sure all parts are included in the kit. If the instructions are not properly followed severe frame, driveline and/or suspension damage may result. Check for frame and suspension damage prior to installation.

This kit does not require welding. Do not weld on any component. Welding may void the warranty and/or cause the product to fail. If any parts are missing, or for tech assistance; Contact King Off Road Racing Shocks: 714-530-8701 Most important after the install, Feel the difference and have fun.