



2021+ Toyota Land Cruiser 300 3.0 IBP Rear Shocks

King Shocks 12472 Edison Way Garden Grove, CA 92841  
714-530-8701 [www.kingshocks.com](http://www.kingshocks.com)

**Rear Parts List:**

- 2 – 3.0 IBP Rear Shocks (33700-395A)
- 2 – Reservoir Brackets (25048-172/173)
- 2 – Reservoir Mount Nut Plates (25049-040)
- 1 – Hardware Kit (KH02-195)

**Tools Required:**

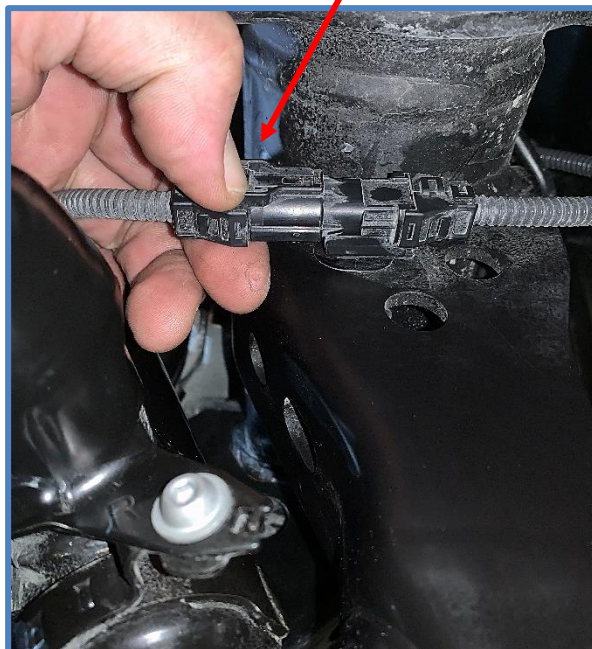
- Floor Jack/Jack Stands
- Metric Wrench/Socket Set
- Standard Wrench/Socket Set

**Toyota Land Cruiser 300**  
**OEM PERFORMANCE SERIES**



**REAR:** With the vehicle on level ground, block the front tires. Using a floor jack, raise the rear end and support the frame rails with jack stands for safety. Remove tires. **NOTE: Never work under an unsupported vehicle.**

1. Disconnect the wire going to the bottom of the shocks. Press the tab and pull to disconnect.



**IMPORTANT:** Read all instructions thoroughly from start to finish before beginning the install. Check parts list and make sure all parts are included in the kit. If the instructions are not properly followed severe frame, driveline and/or suspension damage may result. Check for frame and suspension damage prior to installation.

This kit does not require welding. Do not weld on any component. Welding may void the warranty and/or cause the product to fail. If any parts are missing, or for tech assistance; Contact King Off Road Racing Shocks: 714-530-8701 Most important after the install, Feel the difference and have fun.

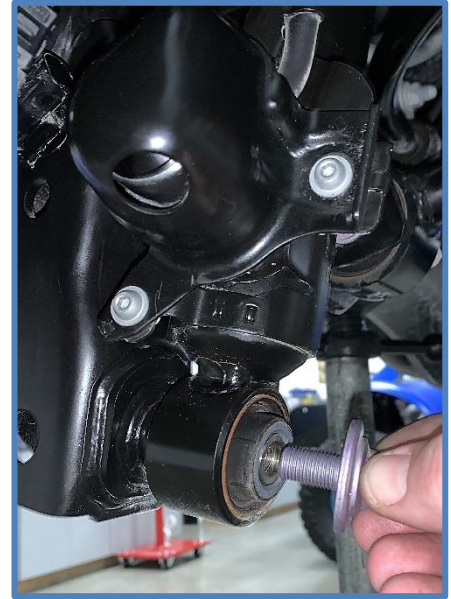




## 2021+ Toyota Land Cruiser 300 3.0 IBP Rear Shocks

King Shocks 12472 Edison Way Garden Grove, CA 92841  
714-530-8701 [www.kingshocks.com](http://www.kingshocks.com)

2. Support the axle with jack stands before removing shocks. Remove the lower mounting bolt using a 17mm socket.



3. Remove the upper mounting nut using a 22mm wrench. You may need to hold the stud with pliers or vise grips to loosen the nut. Remove shocks from vehicle.



**IMPORTANT:** Read all instructions thoroughly from start to finish before beginning the install. Check parts list and make sure all parts are included in the kit. If the instructions are not properly followed severe frame, driveline and/or suspension damage may result. Check for frame and suspension damage prior to installation.

This kit does not require welding. Do not weld on any component. Welding may void the warranty and/or cause the product to fail. If any parts are missing, or for tech assistance; Contact King Off Road Racing Shocks: 714-530-8701 Most important after the install, Feel the difference and have fun.





## 2021+ Toyota Land Cruiser 300 3.0 IBP Rear Shocks

King Shocks 12472 Edison Way Garden Grove, CA 92841  
714-530-8701 [www.kingshocks.com](http://www.kingshocks.com)

4. **Install King Shocks** - Shocks are side specific, be sure you are installing shocks on the proper side. (See final install pictures for reference). Start by removing the nut, washer, anodized blue retainer and upper rubber bushing from the upper mounting stud. Make sure the taller bushing is on the bottom of the stud and insert the shock into the upper mount on the vehicle.



5. Place the upper bushing on the mounting stud followed by the blue retaining washer, 1/2" washer and nut. Apply anti-seize to the threads and thread the nut on finger tight for now to hold the shock in place.



**IMPORTANT:** Read all instructions thoroughly from start to finish before beginning the install. Check parts list and make sure all parts are included in the kit. If the instructions are not properly followed severe frame, driveline and/or suspension damage may result. Check for frame and suspension damage prior to installation.

This kit does not require welding. Do not weld on any component. Welding may void the warranty and/or cause the product to fail. If any parts are missing, or for tech assistance; Contact King Off Road Racing Shocks: 714-530-8701 Most important after the install, Feel the difference and have fun.





## 2021+ Toyota Land Cruiser 300 3.0 IBP Rear Shocks

King Shocks 12472 Edison Way Garden Grove, CA 92841  
714-530-8701 [www.kingshocks.com](http://www.kingshocks.com)

6. Place the spacer on the lower mounting stud first, then place the rod end on the mounting stud and install the provided 12mm bolt (CB3827) with washer (CW1001). Torque bolts to factory specs.



7. Tighten upper nut using a 3/4" wrench.



**Important Note:** The rubber bushings on your King shocks have raised center sections that should be facing each other when installed on vehicle. Taller bushing should be on bottom next to cylinder. The silver washer between the rubber bushings represents the material thickness of the upper shock mount. It's important to tighten the nut only until the rubber bushings start to compress. There should be approximately 1/8 – 3/16" of the mounting pin protruding above the nut.  
**\*Do not over-tighten the nut..**



**IMPORTANT:** Read all instructions thoroughly from start to finish before beginning the install. Check parts list and make sure all parts are included in the kit. If the instructions are not properly followed severe frame, driveline and/or suspension damage may result. Check for frame and suspension damage prior to installation.

This kit does not require welding. Do not weld on any component. Welding may void the warranty and/or cause the product to fail. If any parts are missing, or for tech assistance; Contact King Off Road Racing Shocks: 714-530-8701 Most important after the install, Feel the difference and have fun.

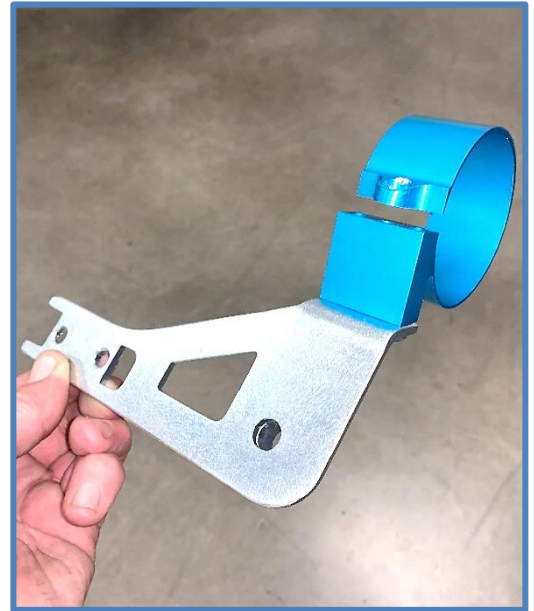




## 2021+ Toyota Land Cruiser 300 3.0 IBP Rear Shocks

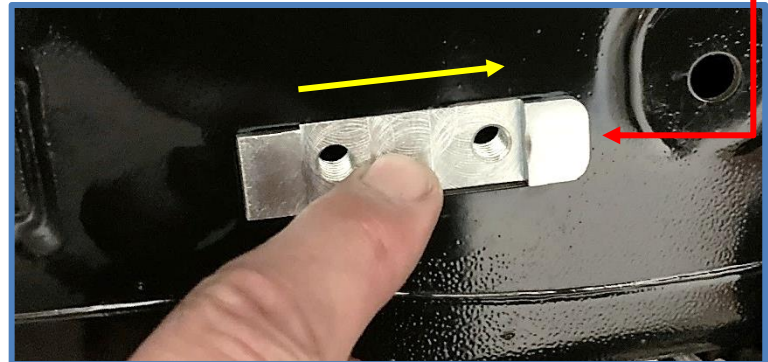
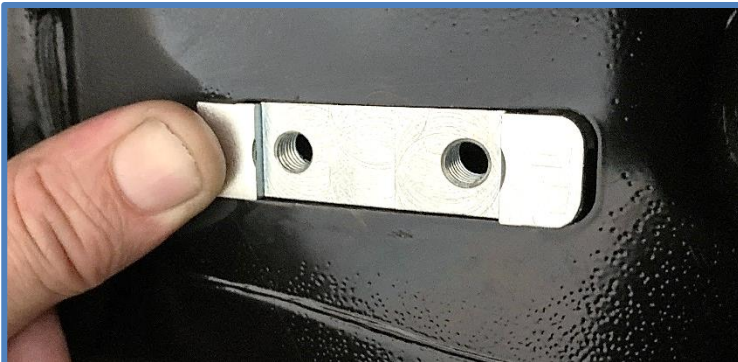
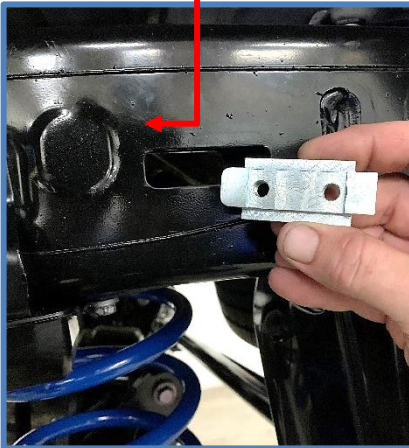
King Shocks 12472 Edison Way Garden Grove, CA 92841  
714-530-8701 [www.kingshocks.com](http://www.kingshocks.com)

8. **Mount Reservoirs** – First attach reservoir clamps to the reservoir brackets using the supplied 1/4 x 1/2" BHCS (CB2420). Apply red locktite to the threads and attach clamps to brackets as shown below.



9. Insert the Backing Plate (25049-040) into the rectangular hole in frame with the rounded corners facing towards the front of vehicle. Flip the plate out with thumb as shown below and slide forward to hold in place.

*(Use a magnet or thread a bolt into plate to help pull backing plate out if you are having trouble.)*



**IMPORTANT:** Read all instructions thoroughly from start to finish before beginning the install. Check parts list and make sure all parts are included in the kit. If the instructions are not properly followed severe frame, driveline and/or suspension damage may result. Check for frame and suspension damage prior to installation.

This kit does not require welding. Do not weld on any component. Welding may void the warranty and/or cause the product to fail. If any parts are missing, or for tech assistance; Contact King Off Road Racing Shocks: 714-530-8701 Most important after the install, Feel the difference and have fun.

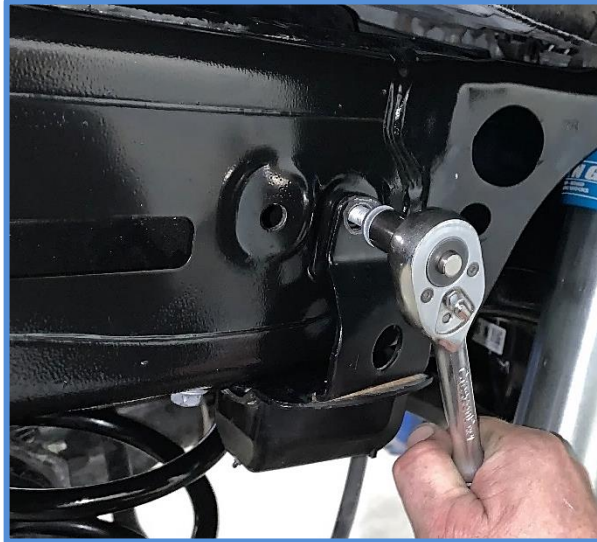




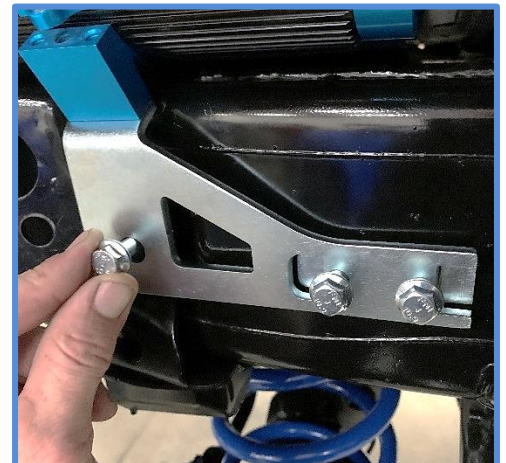
## 2021+ Toyota Land Cruiser 300 3.0 IBP Rear Shocks

King Shocks 12472 Edison Way Garden Grove, CA 92841  
714-530-8701 [www.kingshocks.com](http://www.kingshocks.com)

10. Remove the bolt for the factory bump stop using a 12mm wrench or socket.



11. Slide the reservoir bracket over the reservoir, then place the bracket over the backing plate as shown below. Install the two short 8mm bolts (CB3825) into the backing plate and install the longer 8mm bolt (CB3824) through the bracket and thread into the existing bump stop hole in frame where you just removed the factory bolt. Tighten all bolts using a 12mm wrench or socket.



**IMPORTANT:** Read all instructions thoroughly from start to finish before beginning the install. Check parts list and make sure all parts are included in the kit. If the instructions are not properly followed severe frame, driveline and/or suspension damage may result. Check for frame and suspension damage prior to installation.

This kit does not require welding. Do not weld on any component. Welding may void the warranty and/or cause the product to fail. If any parts are missing, or for tech assistance; Contact King Off Road Racing Shocks: 714-530-8701 Most important after the install, Feel the difference and have fun.





## 2021+ Toyota Land Cruiser 300 3.0 IBP Rear Shocks

King Shocks 12472 Edison Way Garden Grove, CA 92841  
714-530-8701 [www.kingshocks.com](http://www.kingshocks.com)

12. Install the 1/4 x 1" SHCS (CB1501) in the reservoir clamp. Adjust reservoir to its final position (See final install picture below for reference) and tighten bolt using a 3/16 Hex Key.

**DOUBLE CHECK ALL HARDWARE:**

Make sure everything is installed correctly and all hardware is tight before reinstalling tires. Install tires, remove jack stands and lower vehicle to the ground. Recheck all hardware and lug nuts after 100 miles and periodically after that as part of routine maintenance.

**IMPORTANT:** Read all instructions thoroughly from start to finish before beginning the install. Check parts list and make sure all parts are included in the kit. If the instructions are not properly followed severe frame, driveline and/or suspension damage may result. Check for frame and suspension damage prior to installation.

This kit does not require welding. Do not weld on any component. Welding may void the warranty and/or cause the product to fail. If any parts are missing, or for tech assistance; Contact King Off Road Racing Shocks: 714-530-8701 Most important after the install, Feel the difference and have fun.