



## 2018+ Suzuki Jimny 2.0 Steering Stabilizer

King Shocks 12472 Edison Way Garden Grove, CA 92841  
714-530-8701 [www.kingshocks.com](http://www.kingshocks.com)

### Front Parts List:

- 1 – 2.0 Steering Stabilizer (20C001-209)
- 1 – Hardware Kit (KH02-239)

### Tools Required:

- 17mm Wrench & Socket

**Suzuki Jimny**  
OEM PERFORMANCE SERIES



**FRONT:** With the vehicle on level ground, set the emergency brake to secure the vehicle from rolling.

1. Remove the existing stabilizer by first removing the cotter pin from the stud mounted to the drag link.



**IMPORTANT:** Read all instructions thoroughly from start to finish before beginning the install. Check parts list and make sure all parts are included in the kit. If the instructions are not properly followed severe frame, driveline and/or suspension damage may result. Check for frame and suspension damage prior to installation.

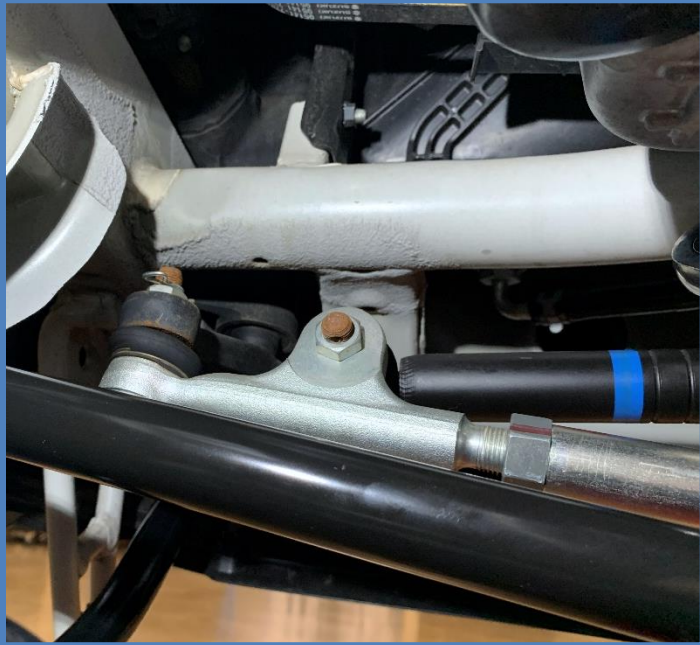
This kit does not require welding. Do not weld on any component. Welding may void the warranty and/or cause the product to fail. If any parts are missing, or for tech assistance; Contact King Off Road Racing Shocks: 714-530-8701 Most important after the install, Feel the difference and have fun.



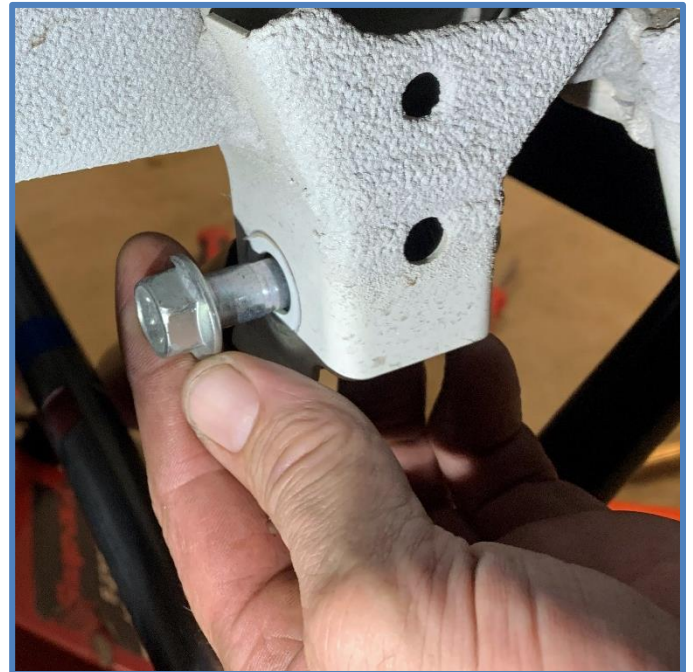
## 2018+ Suzuki Jimny 2.0 Steering Stabilizer

King Shocks 12472 Edison Way Garden Grove, CA 92841  
714-530-8701 [www.kingshocks.com](http://www.kingshocks.com)

2. Remove the nut from the stud using a 17mm socket.



3. Remove the bolt from the frame end using a 17mm socket, then remove stabilizer from vehicle.



**IMPORTANT:** Read all instructions thoroughly from start to finish before beginning the install. Check parts list and make sure all parts are included in the kit. If the instructions are not properly followed severe frame, driveline and/or suspension damage may result. Check for frame and suspension damage prior to installation.

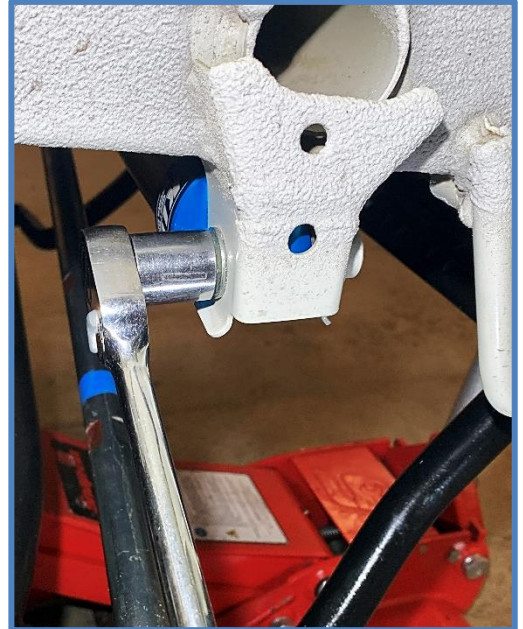
This kit does not require welding. Do not weld on any component. Welding may void the warranty and/or cause the product to fail. If any parts are missing, or for tech assistance; Contact King Off Road Racing Shocks: 714-530-8701 Most important after the install, Feel the difference and have fun.



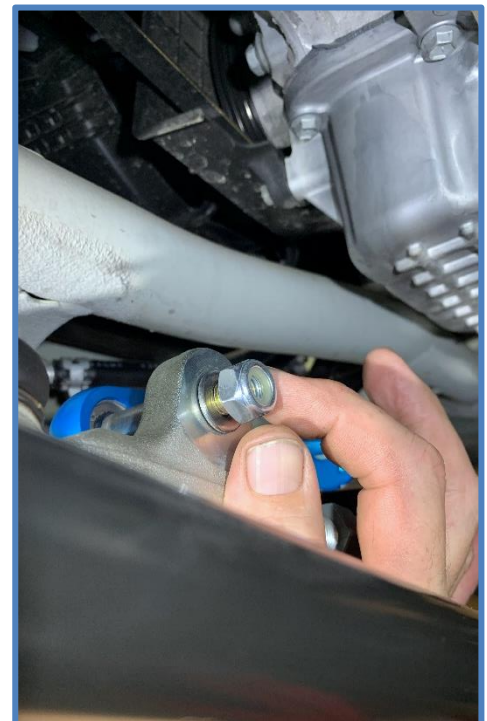
## 2018+ Suzuki Jimny 2.0 Steering Stabilizer

King Shocks 12472 Edison Way Garden Grove, CA 92841  
714-530-8701 [www.kingshocks.com](http://www.kingshocks.com)

4. Install King stabilizer as shown below. First place the end cap in the mount on the frame and install the factory bolt. Tighten bolt and torque to factory specs.



5. Place the rod end with the tapered spacer into the mount on the drag link. Install the supplied 10mm bolt (CB3719) with the supplied washers (CW1802) and nut (CN3001). Tighten bolt and torque to 50 ft/lbs.



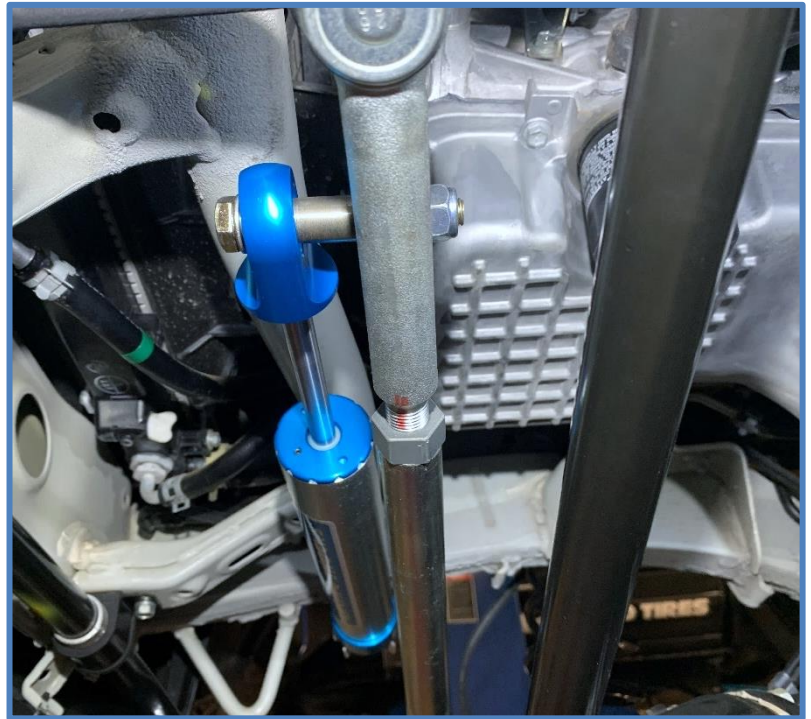
**IMPORTANT:** Read all instructions thoroughly from start to finish before beginning the install. Check parts list and make sure all parts are included in the kit. If the instructions are not properly followed severe frame, driveline and/or suspension damage may result. Check for frame and suspension damage prior to installation.

This kit does not require welding. Do not weld on any component. Welding may void the warranty and/or cause the product to fail. If any parts are missing, or for tech assistance; Contact King Off Road Racing Shocks: 714-530-8701 Most important after the install, Feel the difference and have fun.



## 2018+ Suzuki Jimny 2.0 Steering Stabilizer

King Shocks 12472 Edison Way Garden Grove, CA 92841  
714-530-8701 [www.kingshocks.com](http://www.kingshocks.com)



### **DOUBLE CHECK ALL HARDWARE:**

Make sure the stabilizer is installed properly and all hardware is tight. Recheck all hardware after 100 miles and periodically after that as part of routine maintenance.

**IMPORTANT:** Read all instructions thoroughly from start to finish before beginning the install. Check parts list and make sure all parts are included in the kit. If the instructions are not properly followed severe frame, driveline and/or suspension damage may result. Check for frame and suspension damage prior to installation.

This kit does not require welding. Do not weld on any component. Welding may void the warranty and/or cause the product to fail. If any parts are missing, or for tech assistance; Contact King Off Road Racing Shocks: 714-530-8701 Most important after the install, Feel the difference and have fun.